

WAAS
CH **61301**
W34A

APP CRS
339°

Rwy Idg **8500**
TDZE **329**
Apt Elev **346**

RNAV (GPS) RWY 34L

JACKSON-MEDGAR WILEY EVERS INTL (JAN)

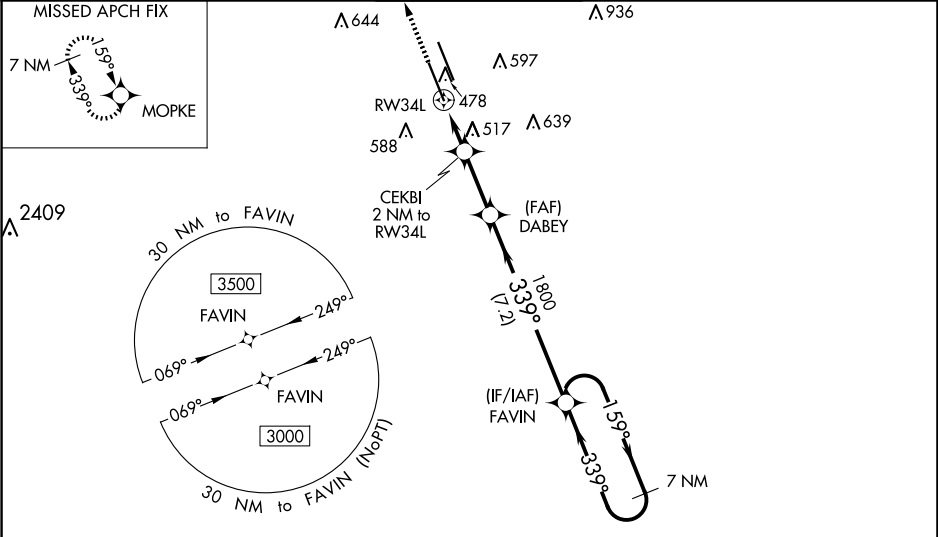
RNP APCH

▼ For uncompensated Baro-VNAV systems, LNAV/VNAV NA below -7°C or above 54°C.
▲ Circling NA for Cat E southwest of Rwy 16R-34L. VDP and Baro-VNAV NA when using Hawkins Fld altimeter setting. When local altimeter setting not received, use Hawkins Fld altimeter setting and increase all DA 19 feet and all MDA 20 feet, increase LNAV/VNAV all Cats visibility to 1½ SM and LNAV Cats C/D/E visibility to RVR 5000. For inop ALS, increase LNAV/VNAV Cat E visibility to 1½ SM and LNAV Cat E visibility to 1½ SM. For inop ALS when using Hawkins Fld altimeter setting, increase LPV Cat E visibility to RVR 4500, LNAV/VNAV Cat E visibility to 1½ SM, and LNAV Cat E visibility to 1½ SM. Inop table does not apply to LPV. Rwy 34L helicopter visibility reduction below RVR 4000 NA.

MALSR
A5

MISSED APPROACH:
Climb to 3000 direct MOPKE and hold.

ATIS 121.05	JACKSON APP CON ★ 123.9 317.7	JACKSON TOWER ★ 120.9 (CTAF) 352.0	GND CON 121.7 348.6	UNICOM 122.95
-----------------------	---	--	-------------------------------	-------------------------



ELEV **346**

TDZE **329**

3000 MOPKE

*LNAV only.

CATEGORY	A	B	C	D	E
LPV DA	579/40 250 (300-¾)				
LNAV/VNAV DA	875-1¾ 546 (600-1¾)				
LNAV MDA	780/40 451 (500-¾)		780/45 451 (500-¾)		
CIRCLING	880-1 534 (600-1)	900-1 554 (600-1)	900-1½ 554 (600-½)	960-2 614 (700-2)	1040-2½ 694 (700-2½)

GP 3.00°
TCH 58