

WAAS CH <b>72911</b> <b>W16A</b>	APP CRS <b>159°</b>	Rwy Idg <b>8500</b> TDZE <b>312</b> Apt Elev <b>346</b>
----------------------------------------	------------------------	---------------------------------------------------------------

RNAV (GPS) RWY 16L

JACKSON-MEDGAR WILEY EVERS INTL (JAN)

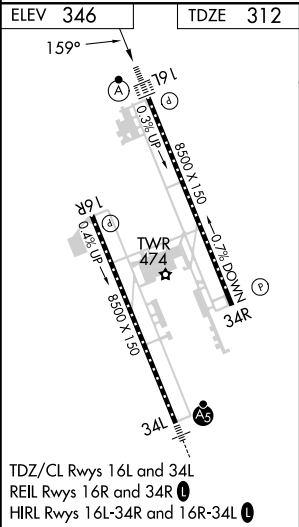
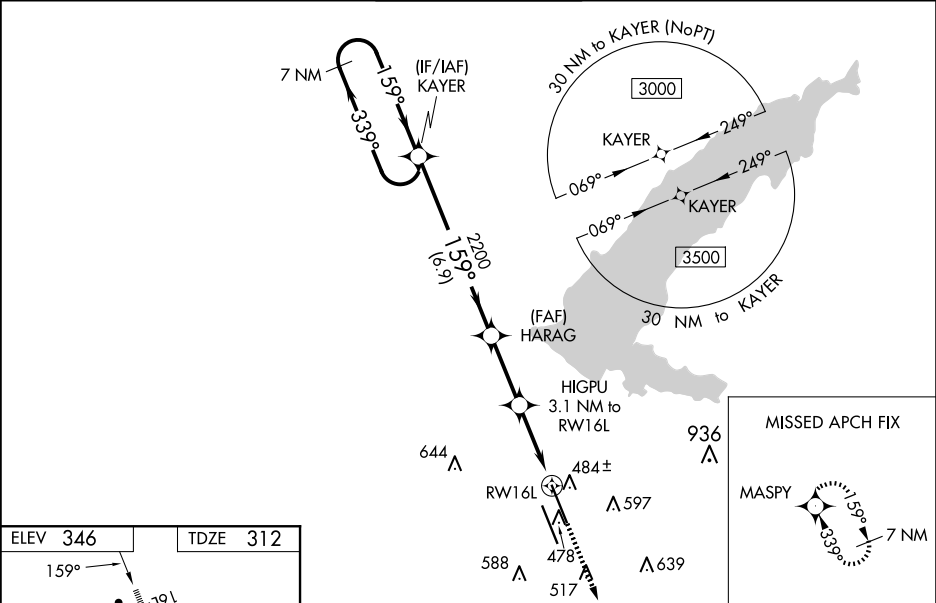
RNP APCH.

▼ For uncompensated Baro-VNAV systems, LNAV/VNAV NA below -7°C or above 54°C.  
▲ Circling NA for Cat E southwest of Rwy 16R-34L. When local altimeter setting not received, use Hawkins Fld altimeter setting and increase all DA 19 feet and all MDA 20 feet, increase ASR LNAV/VNAV all Cats visibility to RVR 3400 and LNAV Cats C/D/E visibility to RVR 5000. VDP and Baro-VNAV NA when using Hawkins Fld altimeter setting. For inop ALS, increase LPV Cat E visibility to RVR 4000, LNAV/VNAV Cat E visibility to RVR 5500, and LNAV Cat E visibility to 1½ SM. For inop ALS when using Hawkins Fld altimeter setting, increase LPV Cat E visibility to RVR 4000, LNAV/VNAV Cat E visibility to RVR 6000, and LNAV Cat E visibility to 1½ SM.



MISSED APPROACH:  
Climb to 3000 direct  
MASPY and hold.

ATIS <b>121.05</b>	JACKSON APP CON ★ <b>123.9 317.7</b>	JACKSON TOWER ★ <b>120.9 (CTAF) 0 352.0</b>	GND CON <b>121.7 348.6</b>	UNICOM <b>122.95</b>
-----------------------	-----------------------------------------	------------------------------------------------	-------------------------------	-------------------------



7 NM Holding Pattern		VGSI and RNAV glidepath not coincident (VGSI Angle 3.00/TCH 71).			3000	MASPY
GP 3.00° TCH 55		*1340		*LNAV only.		
CATEGORY		A	B	C	D	E
LPV DA		512/18 200 (200-½)				
LNAV/VNAV DA		652/31 340 (400-¾)				
LNAV MDA		760/24 448 (500-½)		760/45 448 (500-¾)		
CIRCLING		880-1 534 (600-1)	900-1 554 (600-1)	900-1½ 554 (600-1½)	960-2 614 (700-2)	1040-2½ 694 (700-2½)