

ILS or LOC RWY 34L  
JACKSON-MEDGAR WILEY EVERS INTL (JAN)

LOC I-FRL <b><u>109.3</u></b>	APP CRS <b>339°</b>	Rwy Ldg TDZE Apt Elev	<b>8500</b> <b>329</b> <b>346</b>
----------------------------------	------------------------	-----------------------------	---

DME or RADAR required.

**▼** Circling NA for Cat E southwest of Rwy 16R-34L. Rwy 34L helicopter visibility reduction below RVR 4000 NA. When local altimeter setting not received, use HKS altimeter setting and increase all S-ILS 34L NA to 548 feet increase MDAs 20 feet. For Inop ALS, increase S-ILS 34L Cat E visibility to RVR 4000, increase S-LOC 34L Cat A/B visibility to RVR 5500 and Cat C/D/E to 1½ SM. Procedure turn NA for Cat E.

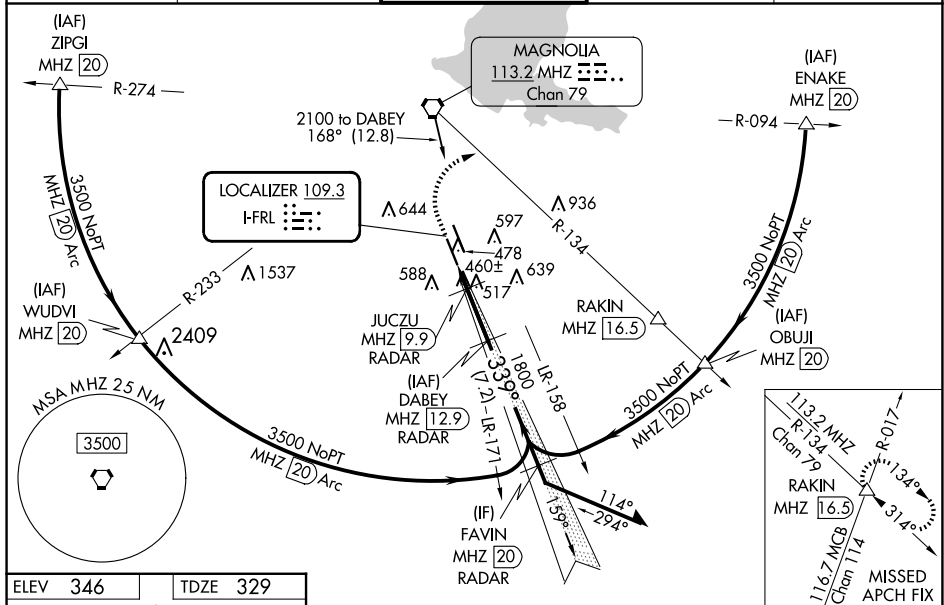
**▲** \* 860 when using HKS altimeter setting.  
# DME from MHZ VORTAC.

MALSR

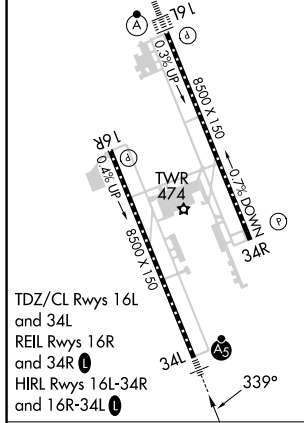


**MISSED APPROACH:**  
Climb to 1200 then  
climbing right turn to  
3000 on heading 070°  
and MHZ VORTAC  
R-134 to RAKIN INT/  
MHZ 16.5 DME and  
hold, continue  
climb-in-hold to 3000.

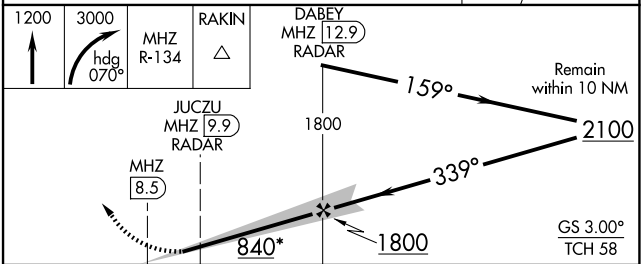
ATIS 121.05	JACKSON APP CON ★ 123.9 317.7	JACKSON TOWER ★ 120.9 (CTAF) 0 352.0	GND CON 121.7 348.6	UNICOM 122.95
----------------	----------------------------------	---	------------------------	------------------



ELEV 346	TDZE 329
----------	----------



FAF to MAP 4.4 NM					
Knots	60	90	120	150	180
Min:Sec	4:24	2:56	2:12	1:46	1:28



CATEGORY	A	B	C	D	E
S-ILS 34L	529/18    200 (200-½)				
S-LOC 34L*	840/40	511 (500-¾)	840/55	511 (500-1)	
<b>(C) CIRCLING</b>	880-1 534 (600-1)	900-1 554 (600-1)	900-1½ 554 (600-1½)	960-2 614 (700-2)	1040-2½ 694 (700-2½)
JUCZU DME MINIMUMS #					
S-LOC 34L	760/40    431 (500-¾)				
<b>(C) CIRCLING</b>	880-1 534 (600-1)	900-1 554 (600-1)	900-1½ 554 (600-1½)	960-2 614 (700-2)	1040-2½ 694 (700-2½)