

LOC I-JAN 110.5	APP CRS 159°	Rwy Ldg TDZE Apt Elev 8500 312 346	ILS RWY 16L (SA CAT I) JACKSON-MEDGAR WILEY EVERS INTL (JAN)	
---------------------------	------------------------	--	--	--

▼

▲

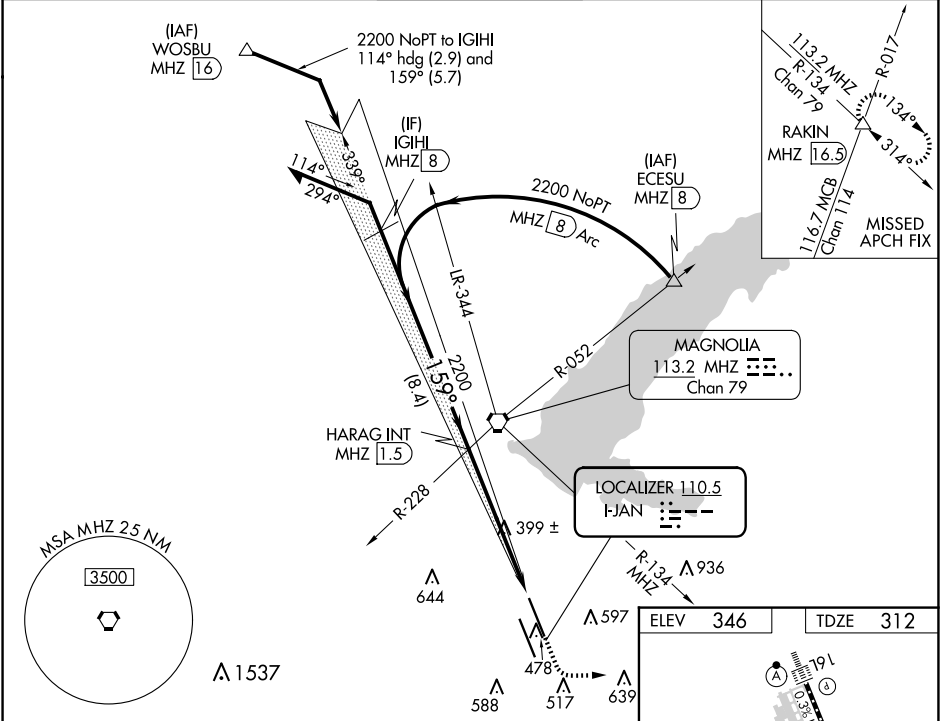
ASR

When control tower closed, procedure NA.
When local altimeter setting not received, procedure NA.
Requires specific OPSPEC, MSPEC, or LOA approval and use of HUD TO DA.

ALSF-2

MISSED APPROACH: Climb to 800 then climbing left turn to 3000 on heading 090° and on MHZ VORTAC R-134 to RAKIN INT/16.5 DME and hold, continue climb-in-hold to 3000.

ATIS 121.05	JACKSON APP CON ★ 123.9 317.7	JACKSON TOWER ★ 120.9 (CTAF) 352.0	GND CON 121.7 348.6	UNICOM 122.95
-----------------------	---	--	-------------------------------	-------------------------



Remain within 10 NM

HARAG INT MHZ 1.5

2200

339°

159°

GS 3.00° TCH 55

2200

5.8 NM

1051'

800

3000

hdg 090°

MHZ R-134

RAKIN

△

VGSI and ILS glidepath not coincident (VGSI Angle 3.00/TCH 71).

CATEGORY	A	B	C	D
S-ILS 16L				

SA CATEGORY I ILS - SPECIAL AIRCREW & AIRCRAFT CERTIFICATION REQUIRED

ELEV 346

TDZE 312

TDZ/CL Rwy 16L and 34L
REIL Rwy 16R and 34R
HIRL Rwy 16L-34R and 16R-34L