

LOC I-JAN	APP CRS	Rwy Ldg	8500
110.5	159°	TDZE	312
		Apt Elev	346

ILS RWY 16L (CAT II & III)
JACKSON-MEDGAR WILEY EVERS INTL (JAN)

⚠

ASR

When control tower closed, procedure NA.
When local altimeter setting not received, procedure NA.

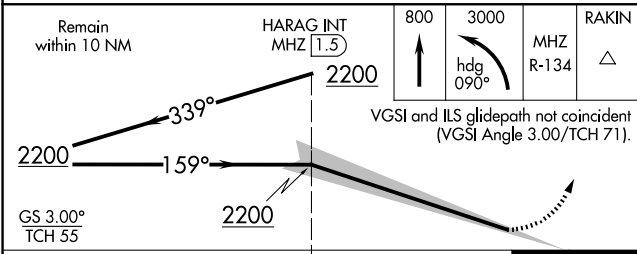
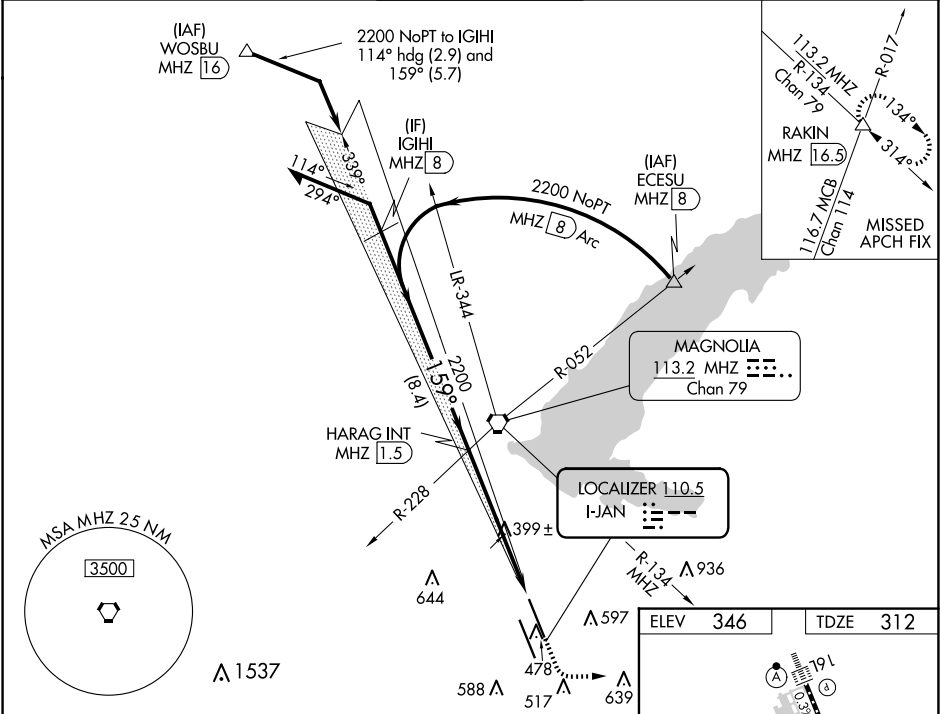
ALS-F-2

Ⓜ

Ⓜ

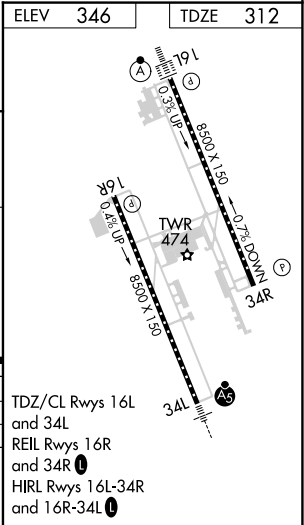
MISSED APPROACH: Climb to 800 then climbing left turn to 3000 on heading 090° and on MHZ VORTAC R-134 to RAKIN INT/16.5 DME and hold, continue climb-in-hold to 3000.

ATIS 121.05	JACKSON APP CON ★ 123.9 317.7	JACKSON TOWER ★ 120.9 (CTAF) 352.0	GND CON 121.7 348.6	UNICOM 122.95
----------------	----------------------------------	---------------------------------------	------------------------	------------------



CATEGORY	A	B	C	D
S-ILS 16L	CAT II RA 119/12 100 DA 412			
S-ILS 16L	CAT III RVR 07			

CATEGORY II & III ILS - SPECIAL AIRCREW
& AIRCRAFT CERTIFICATION REQUIRED



SC-4, 07 AUG 2025 to 04 SEP 2025

SC-4, 07 AUG 2025 to 04 SEP 2025