

WAAS CH 70418 W05A	APP CRS 047°	Rwy Idg TDZE 309 Apt Elev 333
--	------------------------	---

RNAV (GPS) RWY 5

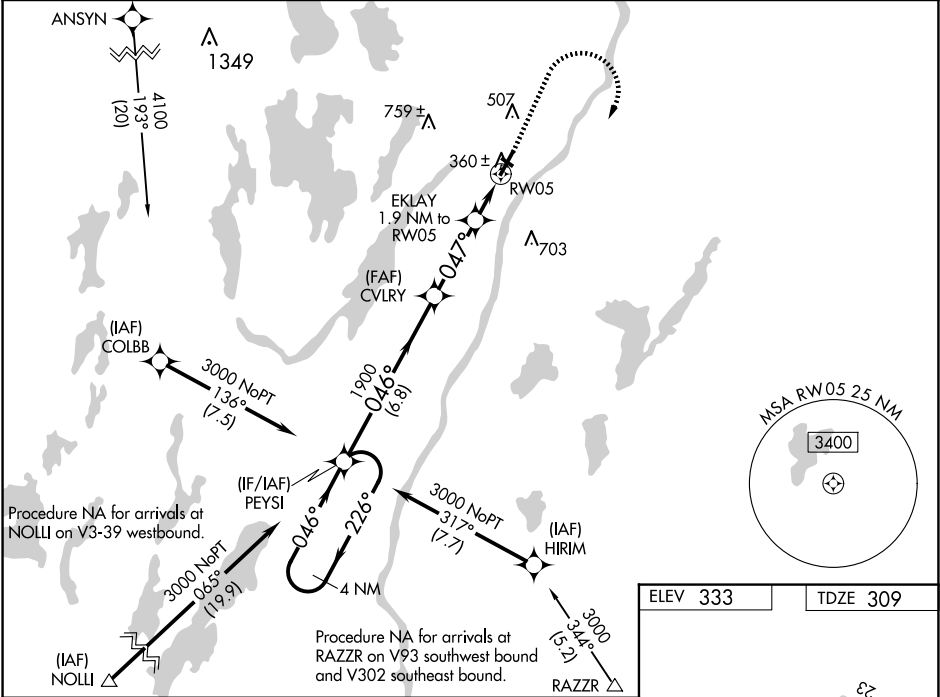
WATERVILLE RGNL (WVL)

⚠ Inop table does not apply to LPV. For uncompensated Baro-VNAV systems, LNAV/VNAV NA below -15°C (5°F) or above 54°C (130°F). DME/DME RNP-0.3 NA. Helicopter visibility reduction below ¾ SM NA. Baro-VNAV and VDP NA when using Augusta altimeter setting. When local altimeter setting not received, use Augusta altimeter setting; increase LPV DA to 544 feet, LNAV/VNAV DA to 623 feet and all visibilities ¾ SM; increase all MDAs 40 feet and Circling Cat C visibility ¼ SM. Night Landing: Rwy 14 NA. For inop MALSF, increase LNAV/VNAV Cat D visibility to 1 mile and LNAV Cats C/D visibility to ¾ mile. For inop MALSF, when using Augusta altimeter setting, increase LPV all Cats visibility to ¾ mile, LNAV/VNAV Cat D visibility to 1 ½ mile, and LNAV Cat D visibility to 1 mile.

MALSF

MISSED APPROACH:
Climb to 1000 then climbing right turn to 3000 direct PEYSI and hold.

AWOS-3PT 118.375	PORTLAND APP CON ★ 128.35 299.2	CLNC DEL 124.6 299.2	UNICOM 122.7 (CTAF) 0
----------------------------	---	--------------------------------	---------------------------------



4 NM Holding Pattern		PEYSI	CVLRY	EKLAY 1.9 NM to RW05	1000	3000	PEYSI
GP 3.00° TCH 48		3000 ← 226°	046° → 046°	1900	* LNAV only.		
		046°	047°	* 920			
		6.8 NM	3.1 NM	1 NM			
CATEGORY	A	B	C	D			
LPV DA	509-¾ 200 (200-¾)						
LNAV/VNAV DA	588-¾ 279 (300-¾)						
LNAV MDA	620-¾ 311 (300-¾)						
CIRCLING	860-1	527 (600-1)	1100-2¼ 767 (800-2¼)	1120-2½ 787 (800-2½)			

