

WAAS CH 63100 W23A	APP CRS 227°	Rwy Idg TDZE 333 Apt Elev 333
--	------------------------	---

RNAV (GPS) RWY 23

WATERVILLE RGNL (WVL)

⚠

⚠

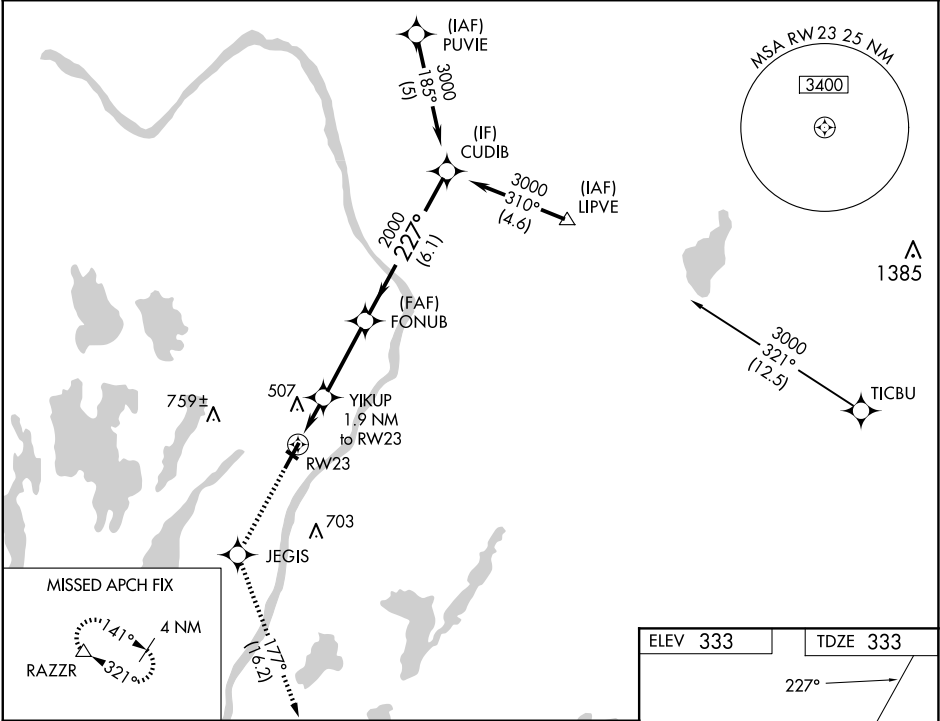
⚠

⚠

Circling to Rwy 14 and 32 NA at night. DME/DME RNP-0.3 NA. When local altimeter setting not received, use Augusta altimeter setting; increase LPV DA to 618 feet and all visibilities ¼ SM; increase all MDAs 40 feet and increase LNAV Cat C and Circling Cat D visibility ¼ SM. VDP NA when using Augusta altimeter setting.

MISSED APPROACH: Climb to 3000 direct JEGIS and via a 177° track to RAZZR and hold.

AWOS-3PT 118.375	PORTLAND APP CON ★ 128.35 299.2	CLNC DEL 124.6 299.2	UNICOM 122.7 (CTAF) ①
----------------------------	---	--------------------------------	---------------------------------



3000	JEGIS	tr 177°	RAZZR
*LNAV only.			
RW23	1.4 NM to RW23	0.5 NM	3.1 NM
YIKUP	1.9 NM to RW23		
FONUB			
CUDIB			
*980			
VGSi and RNAV glidepath not coincident (VGSi Angle 3.00/TCH 40).			
GP 3.00° TCH 45			
Procedure Turn NA			
CATEGORY			
LPV	DA	583-¾ 250 (300-¾)	
LNAV/VNAV	DA	NA	
LNAV MDA	800-1 467 (500-1)	800-1¼ 467 (500-1¼)	800-1½ 467 (500-1½)
CIRCLING	860-1 527 (600-1)	1100-2¼ 767 (800-2¼)	1120-2½ 787 (800-2½)

