

LOC/DME I-RLU 110.5 Chan 42	APP CRS 047°	Rwy Idg 5500 TDZE 309 Apt Elev 333
---	------------------------	---

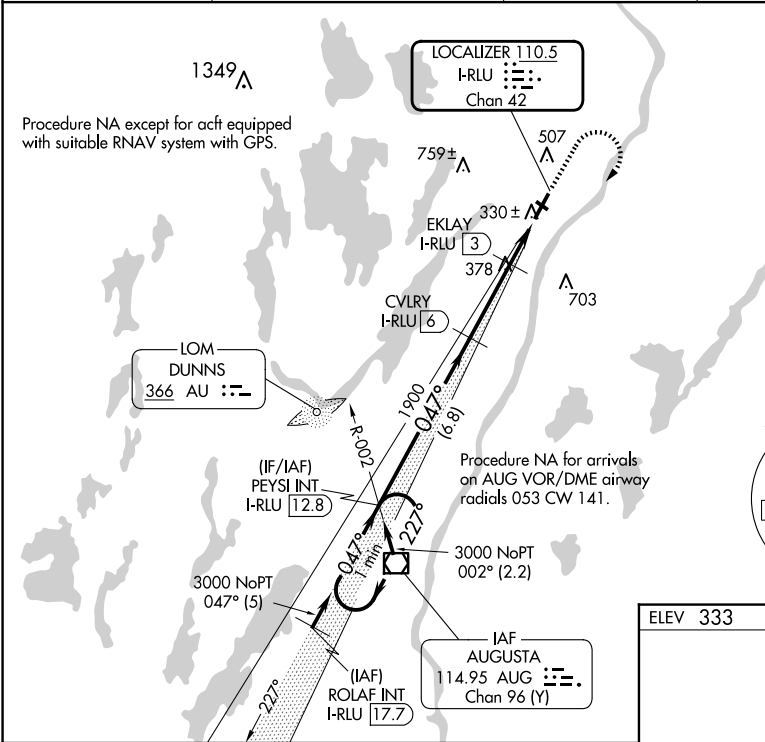
ILS or LOC/DME RWY 5
WATERVILLE RGNL (WVL)

⚠ Night landing: Rwy 14 NA. Helicopter visibility reduction below 3/4 SM NA. VDP NA when using Augusta altimeter setting. When local altimeter setting not received, use Augusta altimeter setting and increase S-ILS 5 DA to 544 feet; increase all MDAs 40 feet and increase S-LOC 5 Cats C/D and Circling Cat D visibility 1/4 SM. Inop table does not apply to S-ILS 5. For inop MALSF, increase S-LOC 5 Cat D visibility to 1 mile. For inop MALSF, when using Augusta altimeter setting, increase S-ILS 5 all Cats visibility to 3/8 mile and S-LOC 5 Cat C/D visibility to 1 1/8 mile. Autopilot coupled approach NA below 600.

MALSF

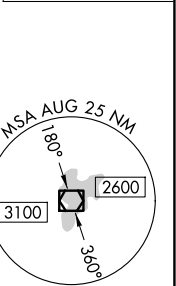
MISSED APPROACH:
Climb to 1200 then
climbing right turn to
3000 direct AUG
VOR/DME and hold.

AWOS-3PT 118.375	PORTLAND APP CON ★ 128.35 299.2	CLNC DEL 124.6 299.2	UNICOM 122.7 (CTAF) 0
----------------------------	---	--------------------------------	---------------------------------



MISSED APCH FIX
AUGUSTA
AUG 114.95
Chan 96 (Y)

ALTERNATE MISSED
APCH FIX
DUNNS
AU 366



ELEV 333 TDZE 309

HIRL Rwy 5-23
REIL Rwy 23

One Minute Holding Pattern		PEYSI INT I-RLU 12.8	CVLRY I-RLU 6	EKLAY I-RLU 3	*LOC only.	
3000 ← 227°		047° →	1900	1200	3000	AUG
GS 3.00°		TCH 48	1900	*920	*I-RLU 2.2	I-RLU 1.1
		6.8 NM	3.1 NM	0.8 NM	1.1 NM	
CATEGORY	A	B	C	D		
S-ILS 5		509-3/4	200 (200-3/4)			
S-LOC 5		680-3/4	371 (400-3/4)			
CIRCLING	860-1	527 (600-1)	1100-2 1/4 767 (800-2 1/4)	1120-2 1/2 787 (800-2 1/2)		

NE-1, 07 AUG 2025 to 04 SEP 2025

NE-1, 07 AUG 2025 to 04 SEP 2025