

WAAS

CH 58304

W36A

APP CRS

005°

Rwy Ldg

5264

TDZE

759

Apt Elev

777

RNAV (GPS) RWY 36

AUBURN UNIVERSITY RGNL (AUO)

▼

▲

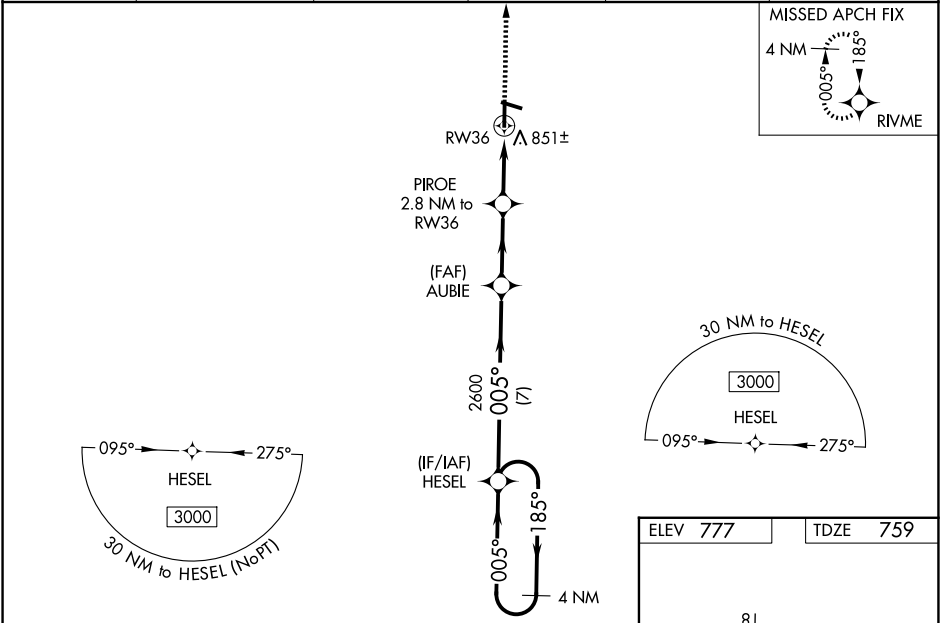
For uncompensated Baro-VNAV systems, LNAV/VNAV NA below -16°C (4°F) or above 54°C (130°F). Baro-VNAV and VDP NA when using Columbus altimeter setting. DME/DME RNP-0.3 NA. When local altimeter setting not received, use Columbus altimeter setting: increase LPV DA to 1072 feet and visibility all Cats ½ SM; increase LNAV/VNAV DA to 1173 feet and visibility all Cats ¾ SM; increase all MDA 120 feet and LNAV Cats C/D visibility ¼ SM and Circling Cats C/D visibility ½ SM. For inop ALS, increase LNAV/VNAV Cat D visibility ¼ SM and LNAV Cat D visibility ½ SM. For inop ALS, when using Columbus altimeter setting, increase LPV all Cats visibility to 1 ½ SM, LNAV/VNAV all Cats visibility to 1 ½ SM, and LNAV all Cats visibility to 1 ¾ SM.

MALSF

MISSED APPROACH:

Climb to 3000 direct RIVME and hold.

AWOS-3PT 132.575	ATLANTA APP CON ★ 125.5 323.1	AUBURN TOWER ★ 123.875	GND CON 121.625	CLNC DEL 118.7 (When twr closed)	UNICOM 123.0 (CTAF) 0
---------------------	----------------------------------	---------------------------	--------------------	--	--------------------------



4 NM Holding Pattern		HESEL		AUBIE		PIROE		RW36	
3000		185°		005°		2600		*1660	
GP 3.00°		TCH 44		7 NM		2.9 NM		1.7 NM	
CATEGORY		A		B		C		D	
LPV DA				959-¾		200 (200-¾)			
LNAV/VNAV DA				1060-⅞		301 (300-⅞)			
LNAV MDA		1120-¾		361 (400-¾)		1120-⅞		361 (400-⅞)	
CIRCLING		1280-1		503 (600-1)		1360-1		583 (600-1)	
						1380-1¾		603 (700-1¾)	
								1480-2¼	
								703 (800-2¼)	

ELEV 777

TDZE 759

4000 X 75

5264 X 100

0.9% UP

005°

MIRL Rwy 11-29 0

HIRL Rwy 18-36 0