

WAAS CH 63139 W11A	APP CRS 111°	Rwy Ldg TDZE 775 Apt Elev 777
--	------------------------	---

RNAV (GPS) RWY 11

AUBURN UNIVERSITY RGNL (AUO)

RNP APCH - GPS.

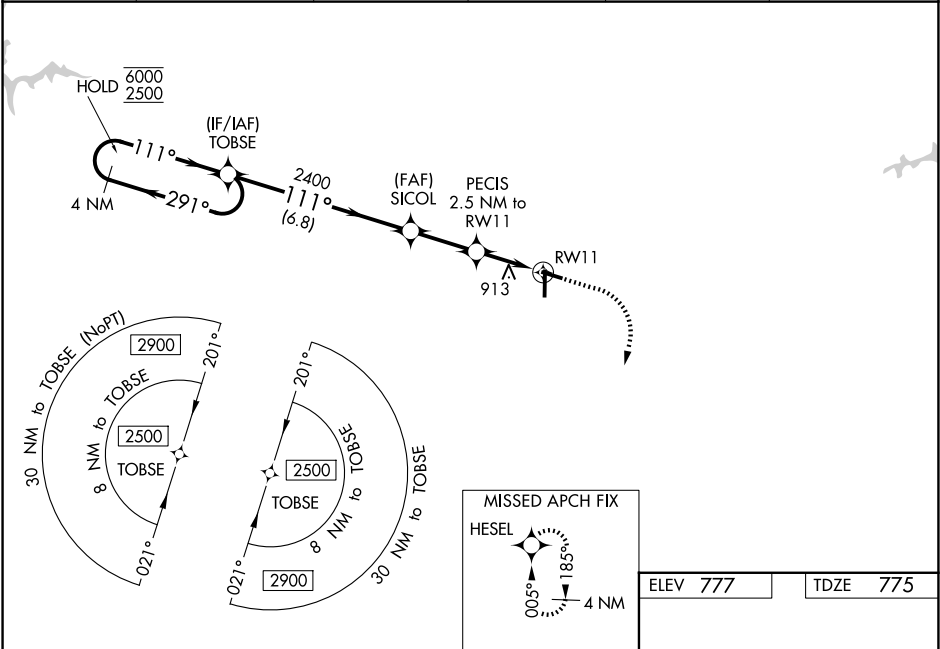
▼

▲

Baro-VNAV and VDP NA when using CSG altimeter setting. For uncompensated Baro-VNAV systems, LNAV/VNAV NA below -16°C or above 54°C. Circling Rwy 29 NA at night. When local altimeter setting not received, use CSG altimeter setting: increase LPV DA to 1139 feet; increase LNAV/VNAV DA to 1334 feet and all visibilities ¼ SM. Increase all MDAs 120 feet and LNAV visibility Cats C/D ¼ SM and Circling Cat C/D visibility ½ SM.

MISSED APPROACH:
Climb to 1300 then climbing right turn to 3000 direct HESEL and hold.

AWOS-3PT 132.575	ATLANTA APP CON ★ 125.5 323.1	AUBURN TOWER ★ 123.875	GND CON★ 121.625	CLNC DEL 118.7 (When twr closed)	UNICOM 123.0 (CTAF) 0
----------------------------	---	----------------------------------	----------------------------	---	--



4 NM Holding Pattern		1300 3000 HESEL		ELEV 777 TDZE 775	
GP 3.00° TCH 45		111° 81		4000 X 75	
6000 2500		2400		5264 X 100	
TOBSE		SICOL		0.9% UP	
2400		1600		36	
6.8 NM		2.5 NM		1.3 NM	
A		B		C	
LPV DA		1025-1		250 (300-1)	
LNAV/VNAV DA		1220-1 3/8		445 (500-1 3/8)	
LNAV MDA		1220-1		445 (500-1)	
CIRCLING		1280-1		1360-1	
		503 (600-1)		603 (700-1 3/4)	
		583 (600-1)		1440-2	
		663 (800-2)		HIRL Rwy 18-36 0	
				MIRL Rwy 11-29 0	