

LOC/DME I-AUO 110.1 Chan 38	APP CRS 005°	Rwy Ldg TDZE Apt Elev 5264 759 777
---	------------------------	--

ILS or LOC RWY 36
AUBURN UNIVERSITY RGNL (AUO)

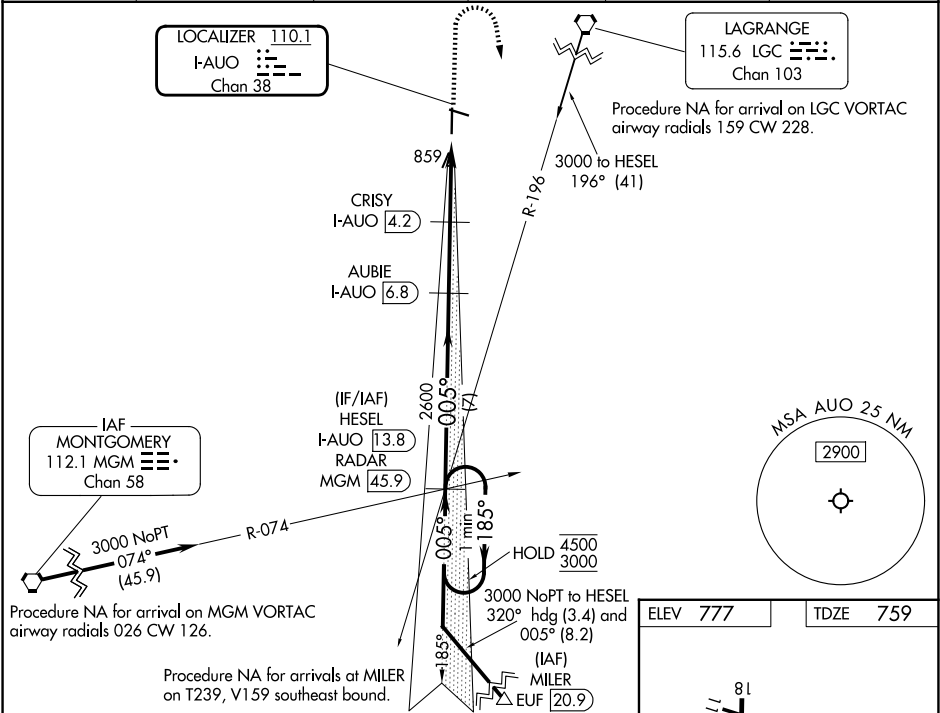
DME required.

⚠ Circling Rwy 29 NA at night. VDP NA when using CSG altimeter setting. When local altimeter setting not received, use CSG altimeter setting and increase S-ILS 36 DA to 1073 feet; increase all MDAs 120 feet and S-LOC 36 visibility Cats C/D ¾ SM, and Circling visibility Cats C/D ½ SM. Inop table does not apply to S-ILS 36 all Cats. For inop ALS when using CSG altimeter setting, increase S-ILS 36 all Cats visibility to ¾ SM.

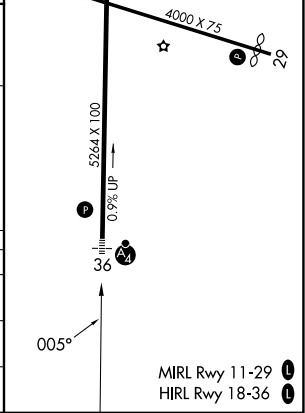
MALSF

MISSED APPROACH: Climb to 1500 then climbing right turn to 3000 on heading 175° and on LGC VORTAC R-196 to HESEL/I-AUO 13.8 DME/RADAR and hold.

AWOS-3PT 132.575	ATLANTA APP CON ★ 125.5 323.1	AUBURN TOWER ★ 123.875	GND CON ★ 121.625	CLNC DEL 118.7 (When hwr closed)	UNICOM 123.0 (CTAF) 0
----------------------------	---	----------------------------------	-----------------------------	---	--



One Minute Holding Pattern	HESEL I-AUO 13.8 RADAR	AUBIE I-AUO 6.8	1500	3000	LGC R-196	HESEL I-AUO 13.8
4500 ← 185°	2600	2600	2600	1780	I-AUO 2.1	I-AUO 1
3000 → 005°	005°	005°	005°	005°	005°	005°
GS 3.00° TCH 44	7 NM	2.5 NM	2.1 NM	1.1 NM		
CATEGORY	A	B	C	D		
S-ILS 36	959-¾ 200 (200-¾)					
S-LOC 36	1120-¾ 361 (400-¾)					
CIRCLING	1280-1 503 (600-1)	1360-1 583 (600-1)	1380-1¾ 603 (700-1¾)	1440-2 663 (700-2)		



SE-4, 07 AUG 2025 to 04 SEP 2025

SE-4, 07 AUG 2025 to 04 SEP 2025