

TACAN NUC Chan 123	APCH CRS 236°	Rwy Idg TDZE Arprt Elev 9301 184 184
------------------------------	-------------------------	--

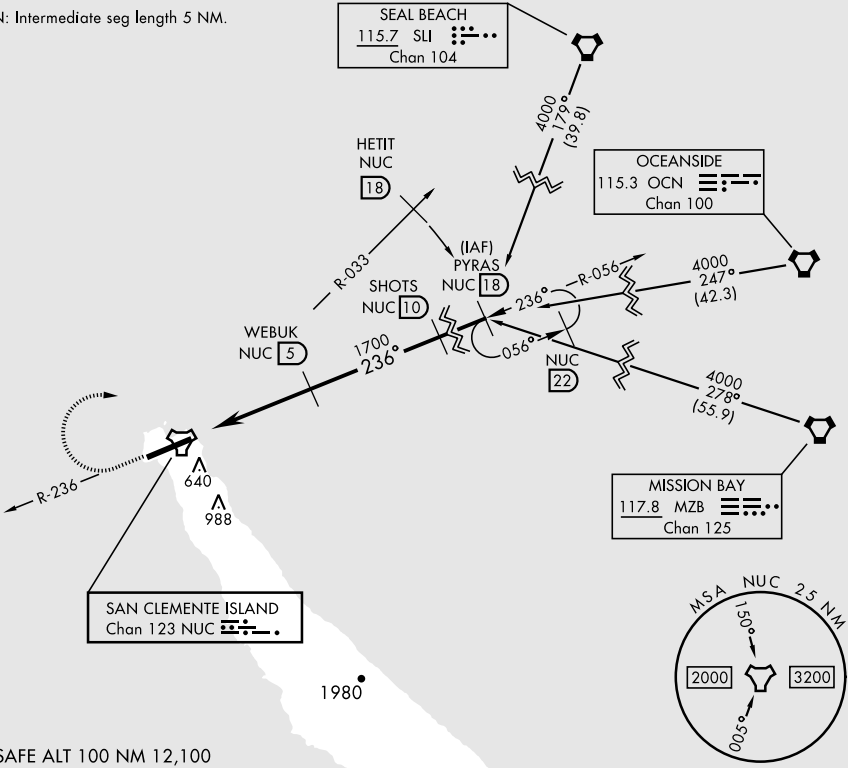
[USN]

TACAN Y RWY 24

SAN CLEMENTE ISLAND NALF (FREDERICK SHERMAN FLD) (KNUC)

<div><div>▼</div><div>* Circling not authorized S of Rwy 6-24.</div></div>	MISSED APPROACH: Climb to 1500 via NUC TACAN R-236 then climbing right turn to 4000 via NUC R-033 to HETIT. Then arc NE of NUC TACAN via the 18 DME arc to PYRAS and hold.	
ATIS ★ 268.6	SAN CLEMENTE APP CON 127.05 292.15	SAN CLEMENTE ISLAND TOWER ★ 126.75 278.8
GND CON 0 119.55 251.05		ASR/PAR

CAUTION: Intermediate seg length 5 NM.



EMERG SAFE ALT 100 NM 12,100

1500 ↑ NUC R-236	4000 ↑ NUC R-033	HETIT Arc NUC 18	PYRAS R-056 NUC 18	
<p>Diagram illustrating the approach path and altitudes:</p> <ul style="list-style-type: none">Altitudes: 1500, 4000, 1700, 3000, 4000.Distances: 4 NM, 2.91° TCH 50.Navigation aids: NUC TACAN, FARNA NUC 1, NUC 2, WEBUK NUC 5, SHOTS NUC 10, PYRAS NUC 18.Angles: 236°, 2.91°.				
CATEGORY	A	B	C	D
S-24	780-1	596 (600-1)	780-1¾	596 (600-1¾)
CIRCLING*	780-1	596 (600-1)	780-1¾ 596 (600-1¾)	780-2 596 (600-2)

ELEV	184	TDZE	184
REIL Rwy 6 REIL Rwy 24 0 HIRL Rwy 6-24 0			

TACAN Y RWY 24

SW-3, 07 AUG 2025 to 04 SEP 2025

SW-3, 07 AUG 2025 to 04 SEP 2025