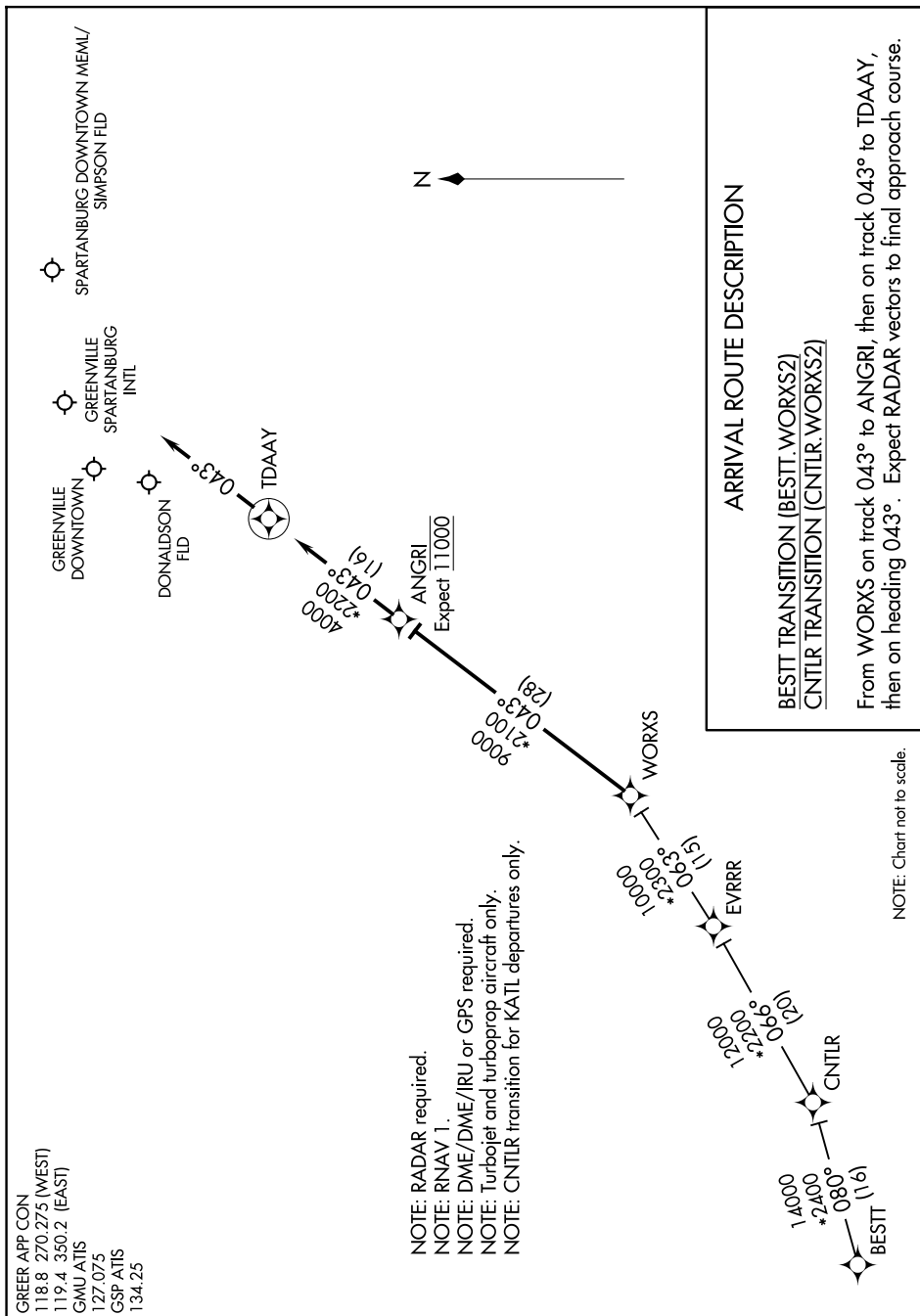


## WORXS TWO ARRIVAL (RNAV)

GREER, SOUTH CAROLINA



GREER APP CON  
1118.8 270.275 (WEST)  
1119.4 350.2 (EAST)  
GMU ATIS  
127.075  
GSP ATIS  
134.25

NOTE: RADAR required.  
NOTE: RNAV 1.  
NOTE: DME/DME/IRU or GPS required.  
NOTE: Turbojet and turboprop aircraft only.  
NOTE: CNTRLR transition for KATL departures only.

NOTE: Chart not to scale.

## ARRIVAL ROUTE DESCRIPTION

BESTT TRANSITION (BESTT.WORXS2)  
CNTLR TRANSITION (CNTLR.WORXS2)

From WORXS on track 043° to ANGRI, then on track 043° to TDAAY, then on heading 043°. Expect RADAR vectors to final approach course.

## WORXS TWO ARRIVAL (RNAV)

(WORXS.WORXS2) 25APR19

GREER, SOUTH CAROLINA