

WAAS CH 78103 W04A	APP CRS 038°	Rwy Idg 11001 TDZE 947 Apt Elev 964
--	------------------------	--

RNAV (GPS) RWY 4

GREENVILLE SPARTANBURG INTL (GSP)

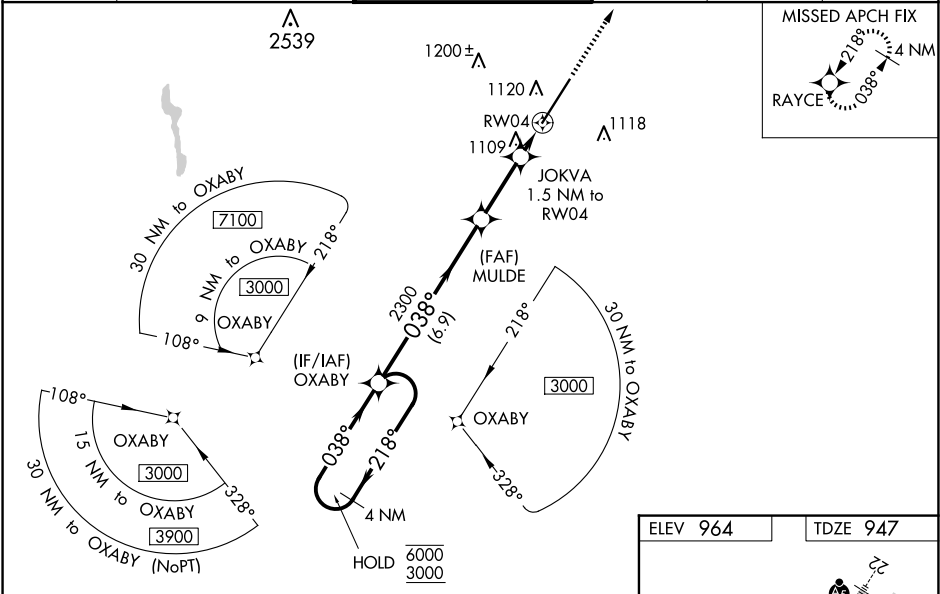
RNP APCH.

For uncompensated Baro-VNAV systems, LNAV/VNAV NA below -10°C or above 54°C. For inop ALS, increase LNAV/VNAV all Cats visibility to 1½ SM and increase LNAV Cat C/D visibility to RVR 6000. When local altimeter setting not received, use Greenville Downtown altimeter setting; increase LPV DA to 1176 feet and LNAV/VNAV DA to 1450 feet and all Cats visibility to RVR 5500; increase all MDAs 40 feet and visibility LNAV Cats C and D to RVR 4500 and Circling Cat D visibility ¼ SM. For inop ALS, when using Greenville Downtown altimeter setting, increase LNAV/VNAV all Cats visibility to 1½ SM. Baro-VNAV NA when using Greenville Downtown altimeter setting.

ALSF-2

MISSED APPROACH:
Climb to 3000 direct RAYCE and hold.

ATIS 134.25	GREER APP CON★ 118.8 270.275	GREER TOWER★ 120.1 (CTAF) 251.15	GND CON 121.9	CLNC DEL 121.9	UNICOM 122.95
-----------------------	--	--	-------------------------	--------------------------	-------------------------



4 NM Holding Pattern		OXABY		MULDE		JOKVA 1.5 NM to RW04		RAYCE	
6000 ← 218° 3000 → 038°		038°		2300		*1460		*LNAV only.	
GP 3.00° TCH 55				2300				RW04	
		6.9 NM		2.6 NM		1.5 NM			
CATEGORY		A	B	C	D				
LPV DA		1147/18		200 (200-½)					
LNAV/VNAV DA		1421/50		474 (500-1)					
LNAV MDA		1360/24	413 (400-½)	1360/40		413 (400-¾)			
CIRCLING		1440-1	476 (500-1)	1480-1½ 516 (600-1½)		1700-2¼ 736 (800-2¼)			

