

LOC/DME I-GSP

109.3

Chan 30

APP CRS

038°

Rwy ldg

11001

TDZE

947

Apt Elev

964

ILS or LOC RWY 4

GREENVILLE SPARTANBURG INTL (GSP)

DME required.

T

A

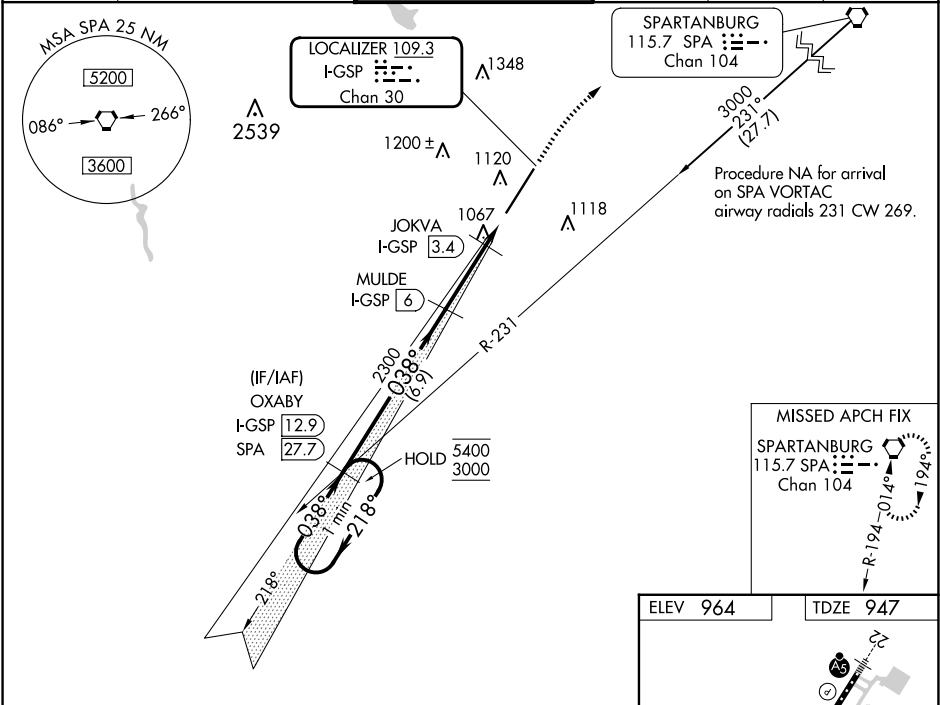
For inop ALS, increase S-LOC 4 Cats C and D visibility to RVR 5500. When local altimeter setting not received, use Greenville Downtown altimeter setting: increase DA to 1176 feet; increase all MDAs 40 feet and visibility S-LOC 4 Cat C/D to RVR 4000 and Circling Cat D ¼ SM. For inop ALS, when using Greenville Downtown altimeter setting, increase S-LOC 4 Cats C/D visibility to RVR 6000.

ALSf-2

A

MISSED APPROACH:
Climb to 3000 then
right turn direct SPA
VORTAC and hold.

ATIS	GREER APP CON★	GREER TOWER★	GND CON	CLNC DEL	UNICOM
134.25	118.8 270.275	120.1 (CTAF) 251.15	121.9	121.9	122.95



One Minute Holding Pattern

OXABY I-GSP 12.9

MULDE I-GSP 6

JOKVA I-GSP 3.4

SPA I-GSP 1.9

3000

SPA

GS 3.00° TCH 55

2300

*1460

6.9 NM

2.6 NM

1.5 NM

*LOC only.

CATEGORY	A	B	C	D
S-ILS 4	1147/18 200 (200-½)			
S-LOC 4	1320/24 373 (400-½)	1320/35 373 (400-¾)		
CIRCLING	1440-1 476 (500-1)	1480-1½ 516 (600-1½)	1700-2¼ 736 (800-2¼)	

ELEV 964

TDZE 947

25

100 X 150

TWR 1061

038°

CL Rwy 22
HIRL Rwy 4-22
TDZ/CL Rwy 4