

WAAS CH 63128 W28A	APP CRS 276°	Rwy Idg 6498 TDZE 596 Apt Elev 609
--	------------------------	---

RNAV (GPS) RWY 28
DELTA COUNTY (ESC)

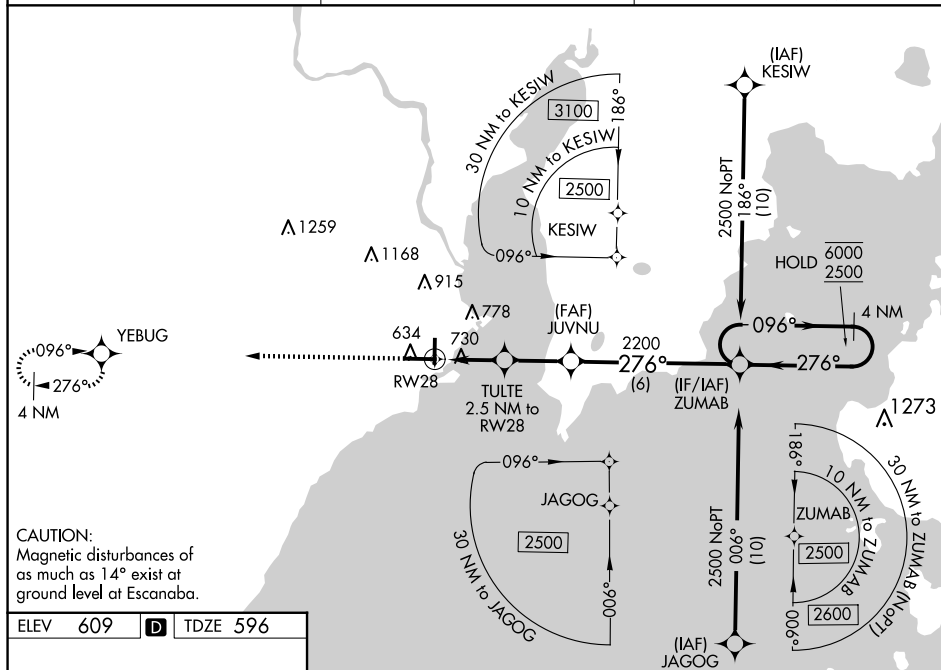
RNP APCH - GPS.



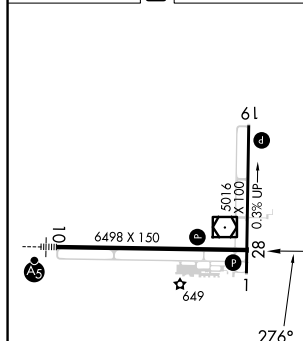
Rwy 28 helicopter visibility reduction below $\frac{3}{4}$ SM NA. For uncompensated Baro-VNAV systems, LNAV/VNAV NA below -16°C or above 54°C .

MISSED APPROACH:
Climb to 2500 direct
YEBUG and hold.

AWOS-3PT 121.425	MINNEAPOLIS CENTER 127.65	UNICOM 122.8 (CTAF) 0
----------------------------	-------------------------------------	--



ELEV 609	D	TDZE 596
----------	----------	----------



HIRL Rwy 10-28 **L**
MIRL Rwy 1-19 **L**
REIL Rwy 1 and 28 **L**

ESCANABA, MICHIGAN

Amdt 1C 03NOV22

45°43'N-87°06'W

DELTA COUNTY (ESC)

RNAV (GPS) RWY 28