

APP CRS	Rwy Idg	<b>5015</b>
<b>186°</b>	TDZE	<b>607</b>
	Apt Elev	<b>609</b>

# RNAV (GPS) RWY 19

RNP APCH - GPS.

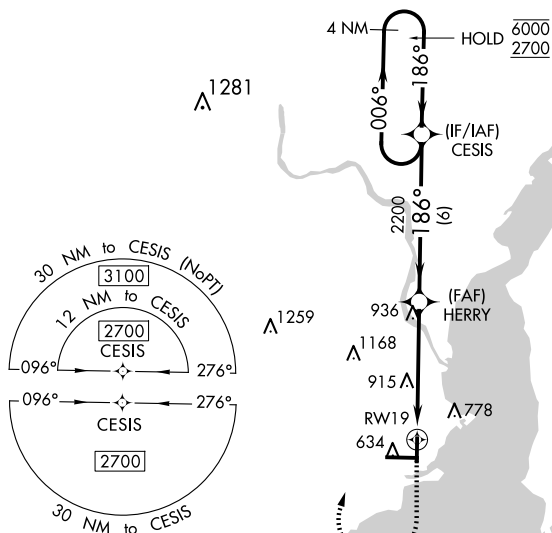
**T**  
**A**

**MISSED APPROACH:**

Climb to 1100, then climbing right turn to 2700 direct CESIS and hold.

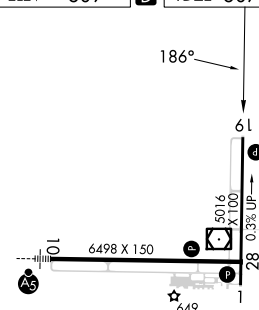
AWOS-3PT  
121.425



MINNEAPOLIS CENTER  
127.65

UNICOM  
122.8 (CTAF) **L**

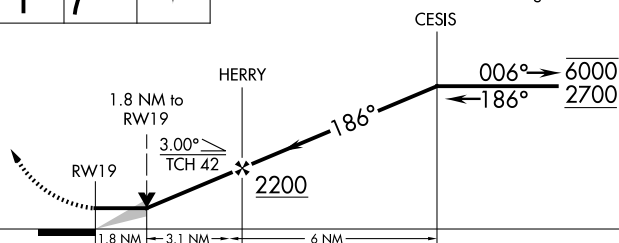
**CAUTION:**  
Magnetic disturbances of  
as much as  $14^\circ$  exist at  
ground level at Escanaba.


ELEV	609	<b>D</b>	TDZE	607
------	-----	----------	------	-----



1100	2700	CESIS
		

4 NM  
Holding Pattern



CATEGORY	A	B	C	D
INAV MDA	1220-1 613 (700-1)		1220-1 $\frac{3}{4}$	613 (700-1 $\frac{3}{4}$ )
 CIRCLING	1220-1 611 (700-1)		1280-1 $\frac{3}{4}$ 671 (700-1 $\frac{3}{4}$ )	1480-2 $\frac{3}{4}$ 871 (900-2 $\frac{3}{4}$ )

ESCANABA, MICHIGAN  
Orig-A 03NOV22

45°43'N-87°06'W

DELTA COUNTY (ESC)  
RNAV (GPS) RWY 19