

WAAS CH 70511 W10A	APP CRS 096°	Rwy Idg 6498 TDZE 609 Apt Elev 609
--	------------------------	--

RNAV (GPS) RWY 10

DELTA COUNTY (ESC)

RNP APCH - GPS.

▼

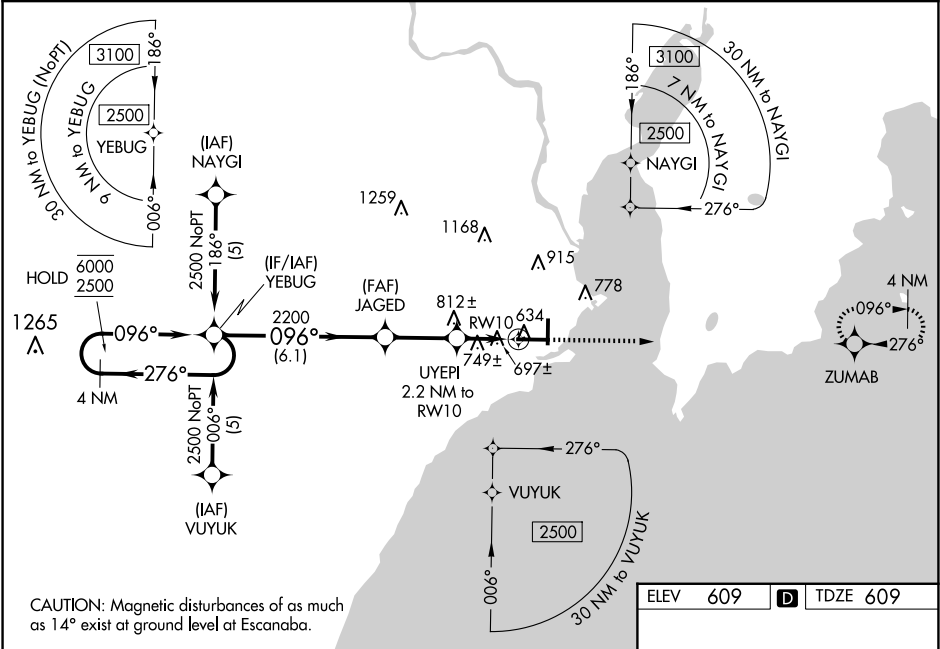
▲

For uncompensated Baro-VNAV systems, LNAV/VNAV NA below -16°C or above 54°C. For inop ALS, increase LNAV/VNAV visibility to 1 SM.

MALSR

MISSED APPROACH:
Climb to 2500 direct ZUMAB and hold.

AWOS-3PT 121.425	MINNEAPOLIS CENTER 127.65	UNICOM 122.8 (CTAF)
----------------------------	-------------------------------------	-------------------------------



4 NM Holding Pattern

YEBUG

JAGED

UYEPI 2.2 NM to RW10

1 NM to RW10

RW10

GP 3.00° TCH 56

6.1 NM 2.6 NM 1.2 NM 1 NM

2500

ZUMAB

CATEGORY	A	B	C	D
LPV DA		809-½	200 (200-½)	
LNAV/VNAV DA		967-⅝	358 (400-⅝)	
LNAV MDA	1000-½	391 (400-½)	1000-⅝	391 (400-⅝)
CIRCLING	1060-1 451 (500-1)	1080-1 471 (500-1)	1280-2 671 (700-2)	1480-2¾ 871 (900-2¾)

ELEV 609 TDZE 609

HIRL Rwy 10-28

MIRL Rwy 1-19

REIL Rws 1 and 28

ESCANABA, MICHIGAN

Oring-C 03NOV22

45°43'N-87°06'W

DELTA COUNTY (ESC)

RNAV (GPS) RWY 10