

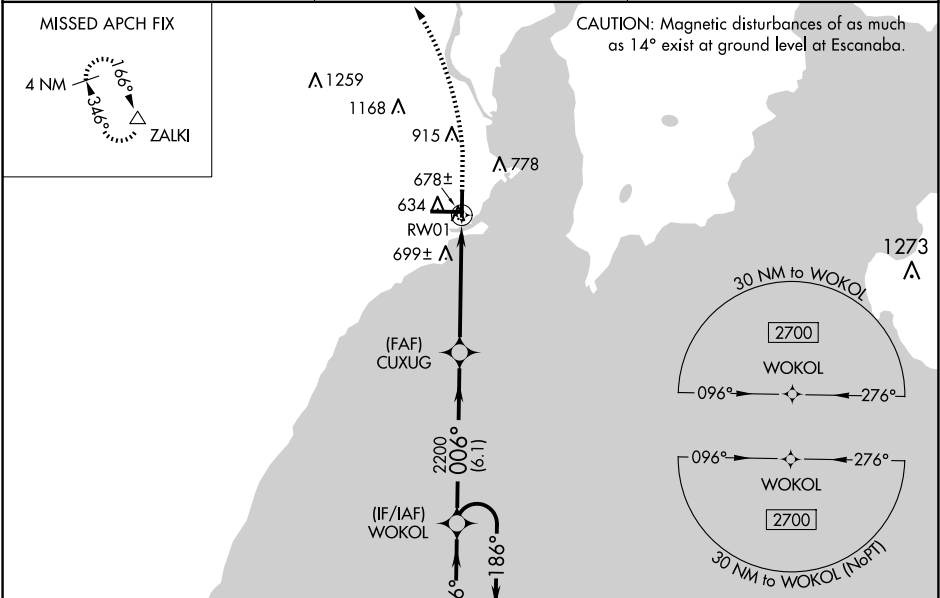
WAAS CH 69333 W01A	APP CRS 006°	Rwy Idg TDZE Apt Elev	5015 600 609
--	------------------------	-----------------------------	---

RNAV (GPS) RWY 1

DELTA COUNTY (ESC)

RNP APCH - GPS.	MISSED APPROACH: Climb to 1100, then climbing left turn to 2800 direct ZALKI and hold.
<div><div></div><div>Rwy 1 helicopter visibility reduction below ¾ SM NA.</div></div>	

AWOS-3PT 121.425	MINNEAPOLIS CENTER 127.65	UNICOM 122.8 (CTAF) 0
----------------------------	-------------------------------------	---------------------------------



4 NM Holding Pattern WOKOL		VGS1 and descent angles not coincident (VGS1 angle 3.00°/TCH 27°).		1100	2800	ZALKI
6.1 NM		3.9 NM		1 NM		
CATEGORY	A	B	C	D		
LP MDA	940-1		340 (400-1)			
LNAY MDA	960-1		360 (400-1)			
CIRCLING	1060-1 451 (500-1)	1080-1 471 (500-1)	1280-2 671 (700-2)	1480-2¾ 871 (900-2¾)		
HIRL Rwy 10-28 0				MIRL Rwy 1-19 0		
REIL Rwy 1 and 28 0						

EC-1, 07 AUG 2025 to 04 SEP 2025

EC-1, 07 AUG 2025 to 04 SEP 2025