
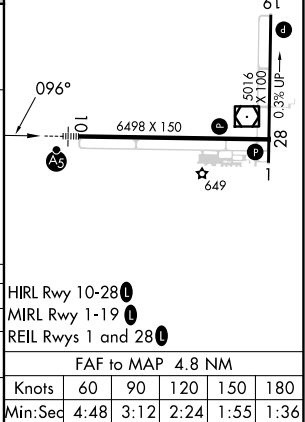
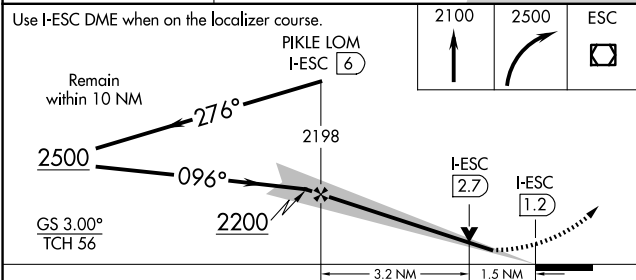
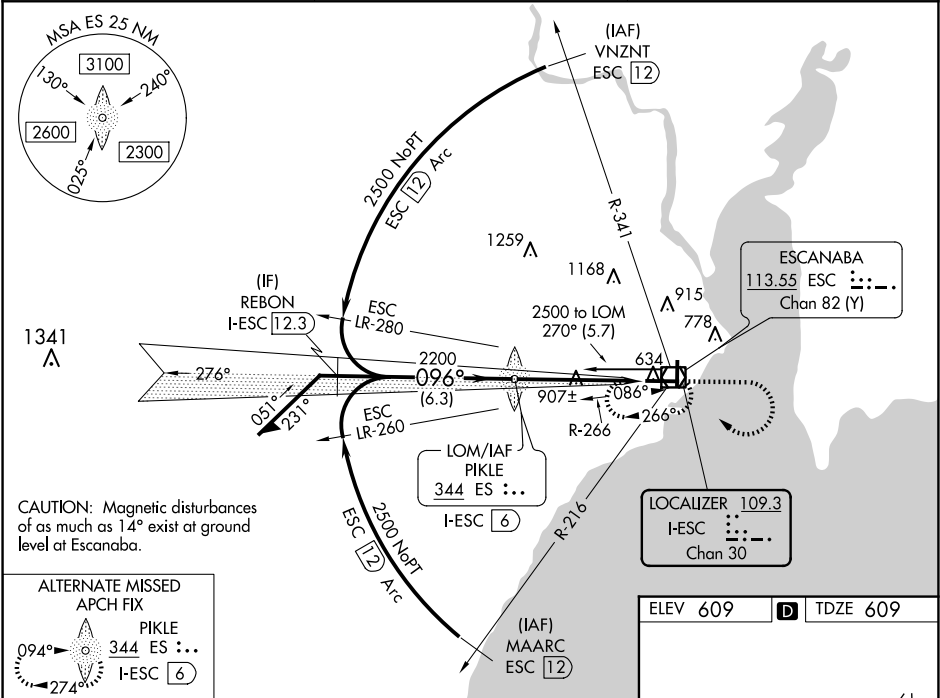


LOC/DME I-ESC <b>109.3</b> Chan 30	APP CRS <b>096°</b>	Rwy ldg <b>6498</b> TDZE <b>609</b> Apt Elev <b>609</b>
--	------------------------	---

ILS or LOC RWY 10  
DELTA COUNTY (ESC)

ADF or DME required for procedure entry. ADF or DME required for LOC only.		<div>MALSR</div> <div></div>	MISSED APPROACH: Climb to 2100 then climbing right turn to 2500 direct ESC VOR/DME and hold.
<div><div><div><div></div></div><div><div></div></div></div><div><div></div></div></div>			
AWOS-3PT 121.425	MINNEAPOLIS CENTER 127.65	UNICOM 122.8 (CTAF) 0	



CATEGORY	A	B	C	D
S-ILS 10		809-½	200 (200-½)	
S-LOC 10	1160-½	551 (600-½)	1160-1½	551 (600-1½)
CIRCLING	1160-1	551 (600-1)	1280-2 671 (700-2)	1480-2¾ 871 (900-2¾)

EC-1, 07 AUG 2025 to 04 SEP 2025

EC-1, 07 AUG 2025 to 04 SEP 2025