

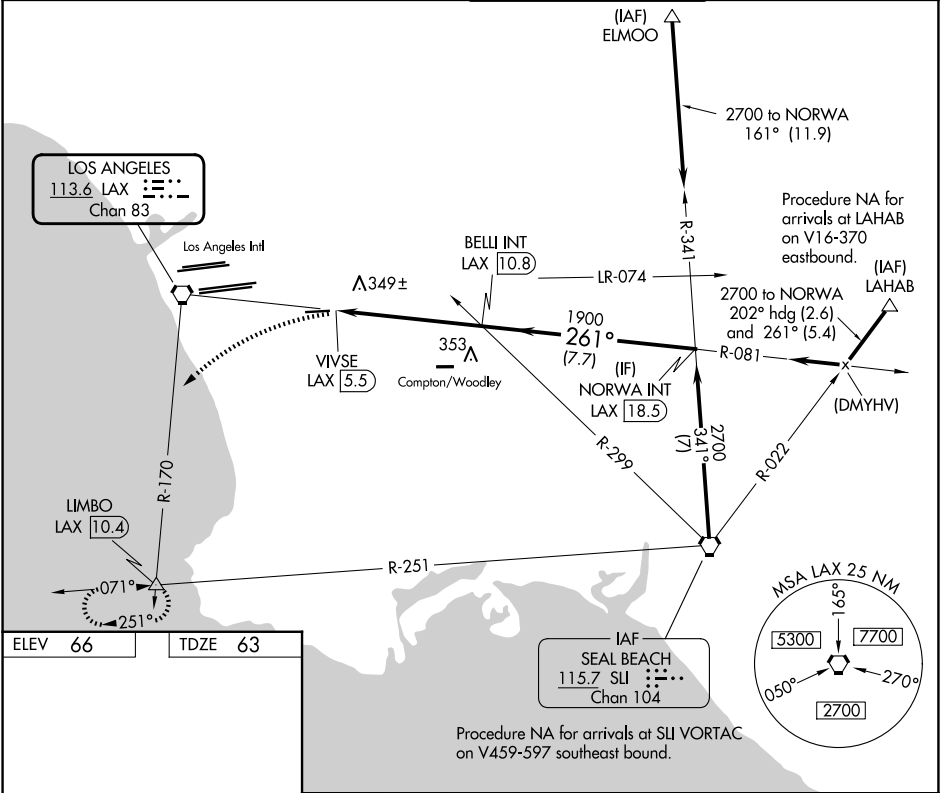
VORTAC LAX	APP CRS	Rwy Ldg	4194
113.6	261°	TDZE	63
Chan 83		Apt Elev	66

JACK NORTHROP FLD/HAWTHORNE MUNI (HHR)

VOR RWY 25

<p>⚠ Circling NA north of Rwy 7-25. Rwy 25 helicopter visibility reduction below 1 SM NA. When local altimeter setting not received, use Los Angeles Intl altimeter setting. Circling Rwy 7 NA at night. Inop table does not apply to S-25 Cats A and B. For inop ALS, increase S-25 Cats C/D visibility to 1½.</p>	<p>ODALS</p> <p>⬆</p>	<p>MISSED APPROACH: Climbing left turn to 3000 via heading 210° and LAX VORTAC R-170 to LIMBO INT/ LAX 10.4 DME and hold.</p>
---	-----------------------	---

ATIS	SOCAL APP CON	HAWTHORNE TOWER ★	GND CON
118.4	124.9 269.0	121.1 (CTAF) 0 257.8	125.1



ELEV 66	TDZE 63
---------	---------

3000

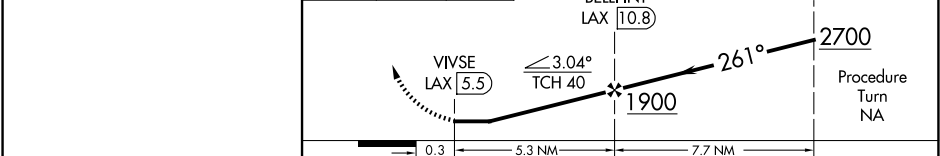
hdg 210°

LAX R-170

LIMBO

TWR 4884 X 100

261°



MIRL Rwy 7-25	CATEGORY			
FAF to MAP 5.3 NM	A			
Knots	60	90	120	150
Min:Sec	5:18	3:32	2:39	2:07
S-25				
620-1 557 (600-1)				
CIRCLING				
620-1 554 (600-1)				
780-2 714 (800-2)				
780-2¼ 714 (800-2¼)				