

WAAS
CH **40344**
W07A

APP CRS
070°

Rwy Ldg
TDZE **64**
Apt Elev **66**

RNAV (GPS) RWY 7

JACK NORTHROP FLD/HAWTHORNE MUNI (HHR)

RNP APCH - GPS.

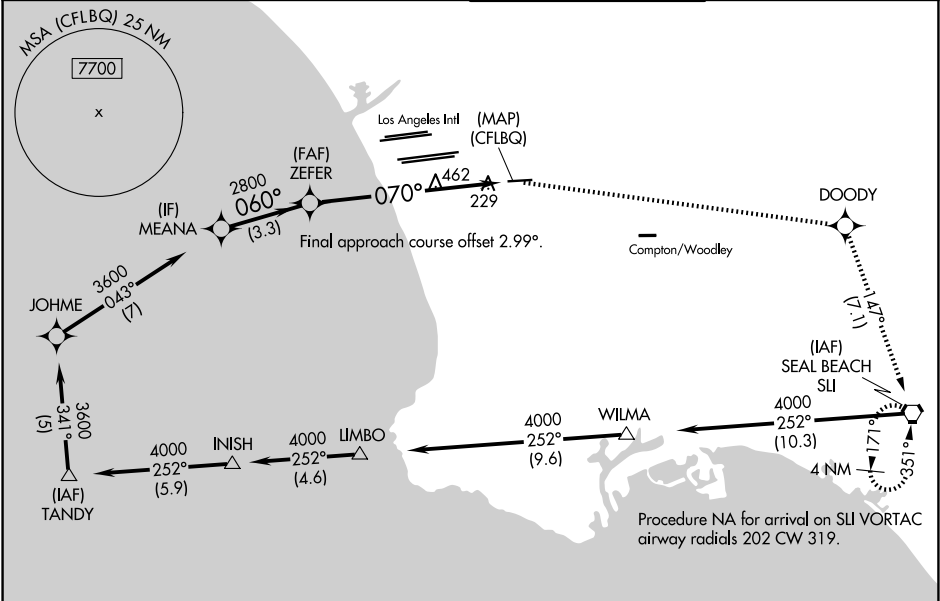
▼

▲

Procedure NA at night. Rwy 7 helicopter visibility reduction below 1 SM NA. For uncompensated Baro-VNAV systems, LNAV/VNAV NA below 5°C or above 51°C. Circling NA north of Rwy 7-25.

MISSED APPROACH: Climb to 4000 direct DOODY and right turn on 147° track to SLI VORTAC and hold, continue climb-in-hold to 4000.

ATIS 118.4	SOCAL APP CON 124.9 269.0	HAWTHORNE TOWER ★ 121.1 (CTAF) 0 257.8	GND CON 125.1
----------------------	-------------------------------------	---	-------------------------



ELEV 66

D

TDZE 64

VGSI and RNAV glidepath not coincident (VGSI Angle 3.25/TCH 25).

MEANA

3600

060°

2800

070°

(CFLBQ)

GP 3.45°

TCH 60

3.3 NM

7.3 NM

4000 DOODY

147° tr

SLI

070°

TWR 4884 X 100

25

CATEGORY	A	B	C	D
LPV DA	342-1 278 (300-1)			
LNAV/VNAV DA	500-1¼ 436 (500-1¼)			
LNAV MDA	780-1	716 (800-1)	780-2	716 (800-2)
CIRCLING	780-1	714 (800-1)	780-2 714 (800-2)	780-2¼ 714 (800-2¼)

MIRL Rwy 7-25 0