

LOC I-HHR	APP CRS	Rwy Ldg	4194
109.1	253°	TDZE	63
		Apt Elev	66

LOC RWY 25

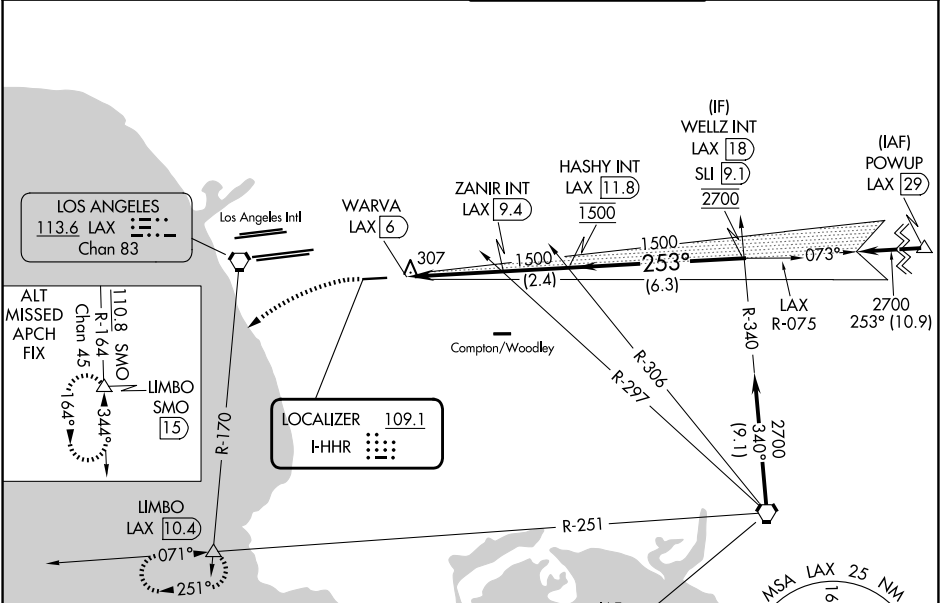
JACK NORTHROP FLD/HAWTHORNE MUNI (HHR)

⚠ Inop table does not apply. Rwy 25 helicopter visibility reduction below 1 SM NA. Circling Rwy 7 NA at night. When local altimeter setting not received, use Los Angeles Intl altimeter setting. Simultaneous approach authorized with LAX 25L/R 24L/R. Circling NA north of Rwy 7-25. DME from LAX VORTAC. Simultaneous reception of I-HHR and LAX DME required.

ODALS

MISSED APPROACH: Climbing left turn to 3000 on heading 210° and LAX VORTAC R-170 to LIMBO INT/LAX 10.4 DME and hold.

ATIS	SOCAL APP CON	HAWTHORNE TOWER ★	GND CON
118.4	124.9 269.0	121.1(CTAF) 0 257.8	125.1



ELEV 66	D	TDZE 63
---------	---	---------

TWR 4884 X 100

253°

3000

hdg 210°

LOC unusable from MAP inbound.

WARVA LAX 6

3.10 TCH 45

1500

1500

253°

2700

0.8 NM

3.4 NM

2.4 NM

6.3 NM

MIRL Rwy 7-25

FAF to MAP 3.4 NM

Knots	60	90	120	150	180
Min:Sec	3:24	2:16	1:42	1:22	1:08

CATEGORY		A	B	C	D
S-25		580-1	517 (600-1)	580-1 ³ / ₈	517 (600-1 ³ / ₈)
CIRCLING		620-1	554 (600-1)	780-2	780-2 ¹ / ₄
				714 (800-2)	714 (800-2 ¹ / ₄)

SW-3, 07 AUG 2025 to 04 SEP 2025

SW-3, 07 AUG 2025 to 04 SEP 2025