


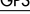

DANVILLE, ILLINOIS

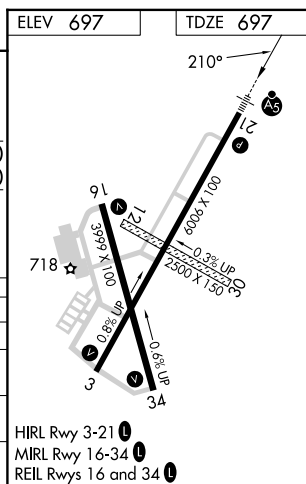
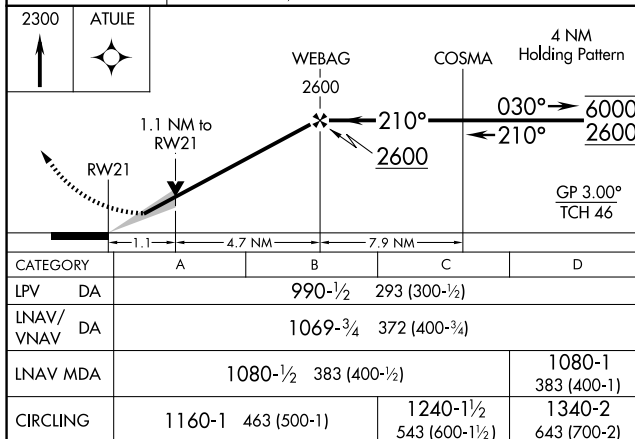
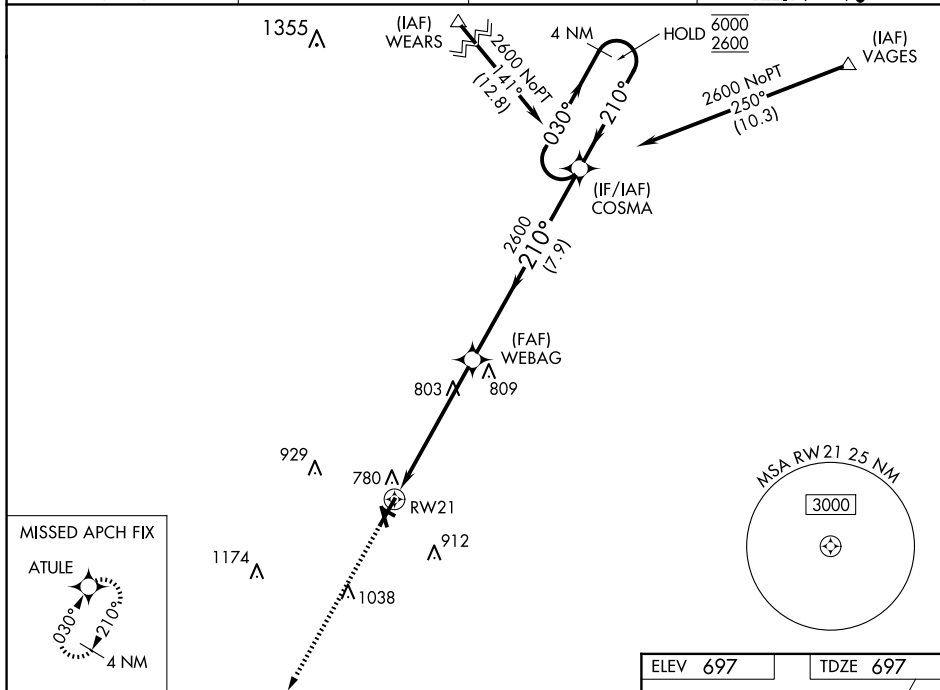
AL-5117 (FAA)

23334

WAAS CH 58004 W21A	APP CRS 210°	Rwy Idg 6006 TDZE 697 Apt Elev 697
--	------------------------	---

RNAV (GPS) RWY 21
VERMILION RGNL (DNV)

RNP APCH - GPS.			 MALSR	MISSED APPROACH: Climb to 2300 direct ATULE and hold.
 Circling NA to Rwy's 12 and 30. For uncompensated Baro-VNAV systems, LNAV/VNAV NA below -16°C or above 54°C. For inop ALS, increase LPV all Cats visibility to 1 SM and LNAV Cat D visibility to 1¼ SM.				
AWOS-3 119.275	CHAMPAIGN APP CON ★ 121.35 285.65	CLNC DEL 121.7	UNICOM 122.7 (CTAF) 	



DANVILLE, ILLINOIS
Orig-C 30NOV23

40°12'N-87°36'W

VERMILION RGNL (DNV)

RNAV (GPS) RWY 21

EC-3, 07 AUG 2025 to 04 SEP 2025