

HAGERSTOWN, MARYLAND

AL-5114 (FAA)

25107

WAAS CH 86911 W27A	APP CRS 272°	Rwy Idg 7000 TDZE 701 Apt Elev 703
--	------------------------	---

RNAV (GPS) RWY 27

HAGERSTOWN RGNL/RICHARD A HENSON FLD (HGR)

RNP APCH - GPS.



For uncompensated Baro-VNAV systems, LNAV/VNAV NA below -13°C or above 54°C.

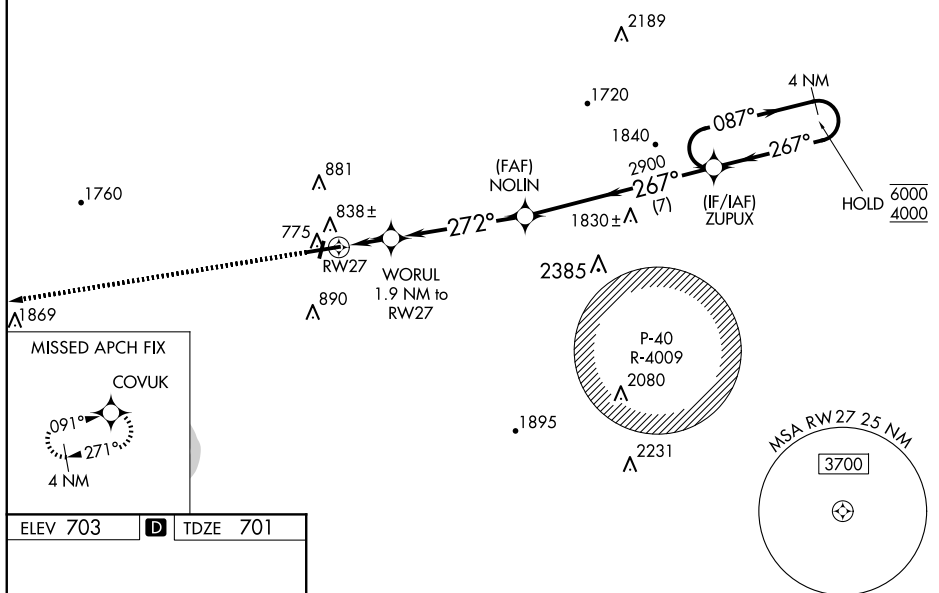
MALSR



MISSED APPROACH: Climb to 3600 direct COVUK and hold, continue climb-in-hold to 3600.

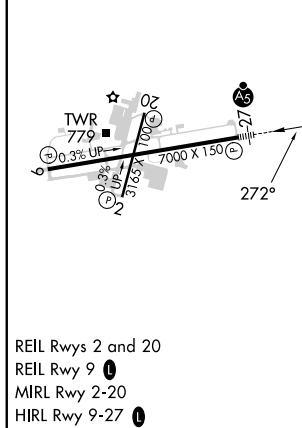
ASOS 126.375	POTOMAC APP CON 126.825 239.025	HAGERSTOWN TOWER ★ 120.3 (CTAF) 0 225.4	GND CON 120.8	UNICOM 122.95
------------------------	---	---	-------------------------	-------------------------

A 2314



NE-3, 07 AUG 2025 to 04 SEP 2025

ELEV 703	D	TDZE 701
----------	----------	----------



3600
↑
COVUK

WORLD 1.9 NM to RW27

NOLIN 2900

ZUPUX

4 NM Holding Pattern

087° → 6000
← 267° 4000

GP 3.00°
TCH 55

1 NM to RW27

272°

267°

267°

1 NM

0.9

4.9 NM

7 NM

CATEGORY	A	B	C	D
LPV DA	901-1/2	200 (200-1/2)		
RNAV/ VNAV DA	986-1/2	285 (300-1/2)		
RNAV MDA	1060-1/2	359 (400-1/2)	1060-5/8	359 (400-5/8)
C CIRCLING	1160-1	457 (500-1)	1200-1 1/2 497 (500-1 1/2)	1300-2 597 (600-2)

HAGERSTOWN, MARYLAND

Amdt 2 05OCT23

HAGERSTOWN RGNL/RICHARD A HENSON FLD (HGR)

39°43'N-77°44'W

RNAV (GPS) RWY 27