

APP CRS
095°

Rwy Idg
TDZE
603

Apt Elev
604

RNAV (GPS) RWY 9

GRAND HAVEN MEML AIRPARK (3GM)

RNP APCH.

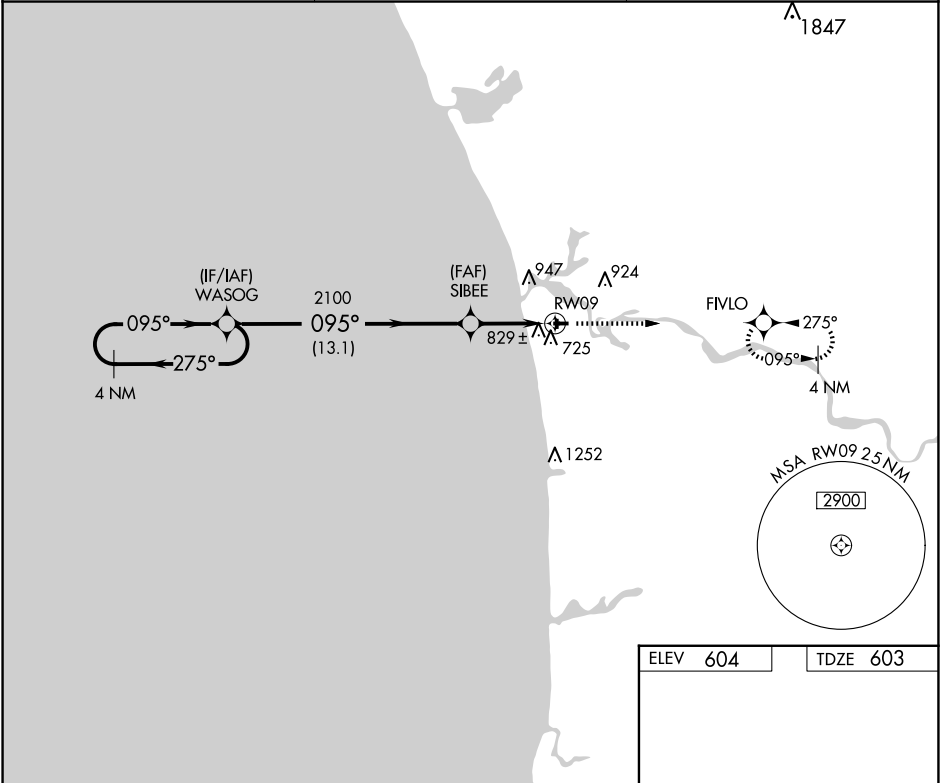
▼

▲ NA

Use Muskegon altimeter setting. Circling Rwy 18, 36 NA at night.
Rwy 9 helicopter visibility reduction below ¾ SM NA.

MISSED APPROACH: Climb to 2700 direct FIVLO and hold.

| | | |
|--------------------------|---|---------------------------------|
| MKG ASOS 124.3 | GREAT LAKES APP CON★ 133.825 290.35 | UNICOM 122.7 (CTAF) 0 |
|--------------------------|---|---------------------------------|



4 NM Holding Pattern

WASOG

SIBEE

RWY09

2700

FIVLO

3000

2100

13.1 NM

4.5 NM

3.04°

TCH 35

095°

275°

| CATEGORY | A | B | C | D |
|----------|--------|-------------|-------------------------|----|
| LNAV MDA | 1140-1 | 537 (600-1) | 1140-1½ 537 (600-1½) | NA |
| CIRCLING | 1240-1 | 636 (700-1) | 1320-2 716 (800-2) | NA |

ELEV 604

TDZE 603

81

36

2058 X 40

3752 X 75

0.3% UP

0.3% UP

095°

27

REIL Rwy 9 and 27 0

MIRL Rwy 9-27 and 18-36 0

EC-1, 07 AUG 2025 to 04 SEP 2025

EC-1, 07 AUG 2025 to 04 SEP 2025