

WAAS

CH **77614**

W01A

APP CRS

005°

Rwy Ldg

4003

TDZE

410

Apt Elev

420

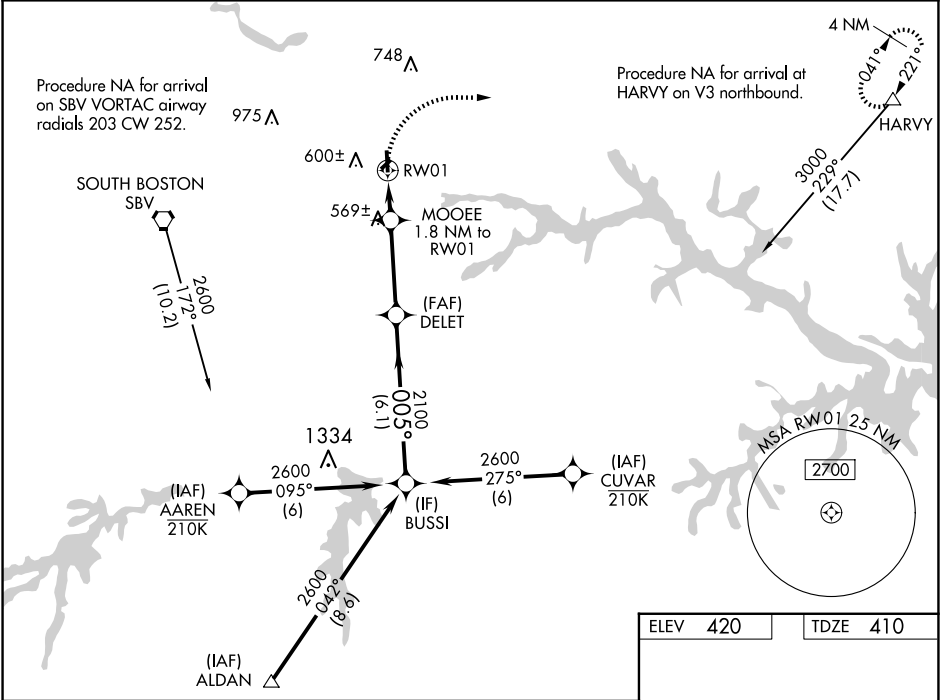
RNAV (GPS) RWY 1

WILLIAM M TUCK (W78)

⚠ For uncompensated Baro-VNAV systems, LNAV/VNAV NA below -15°C (5°F) or above 54°C (130°F).
⚠ DME/DME RNP-0.3 NA. Helicopter visibility reduction below 1 SM NA. When local altimeter setting not received, use Danville altimeter setting and increase LPV DA to 739 feet and LNAV/VNAV DA to 785 feet and all MDA 100 feet; increase LPV all Cats visibility ¼ mile and LNAV/VNAV all Cats visibility and Circling Cat C visibility ¼ mile and LNAV Cat C visibility ½ mile. Night landing: Rwy 19 NA. Baro-VNAV and VDP NA when using Danville altimeter setting. Circling NA to Rwys 6-24.

MISSED APPROACH:
Climbing right turn to 3000 direct HARVY and hold.

AWOS-3 119.425	WASHINGTON CENTER 124.05 352.0	UNICOM 122.8 (CTAF) 0
--------------------------	--	---------------------------------



3000 HARVY		RW01		MOOEE 1.8 NM to RW01		DELET 2100		BUSSI 2600	
*LNAV only.		*1.2 NM to RW01		*1000		GP 3.00°		TCH 59	
1.2 NM		0.6 NM		3.4 NM		6.1 NM			
CATEGORY	A	B		C		D			
LPV DA	660-1		250 (300-1)		NA				
LNAV/VNAV DA	706-1		296 (300-1)		NA				
LNAV MDA	820-1	410 (400-1)		820-1 1/8 410 (400-1 1/8)		NA			
CIRCLING	960-1	540 (600-1)		1060-1 3/4 640 (700-1 3/4)		NA			

