

WAAS CH 97612 W31A	APP CRS 309°	Rwy Idg TDZE Apt Elev	5500 2025 2032
--	------------------------	-----------------------------	---

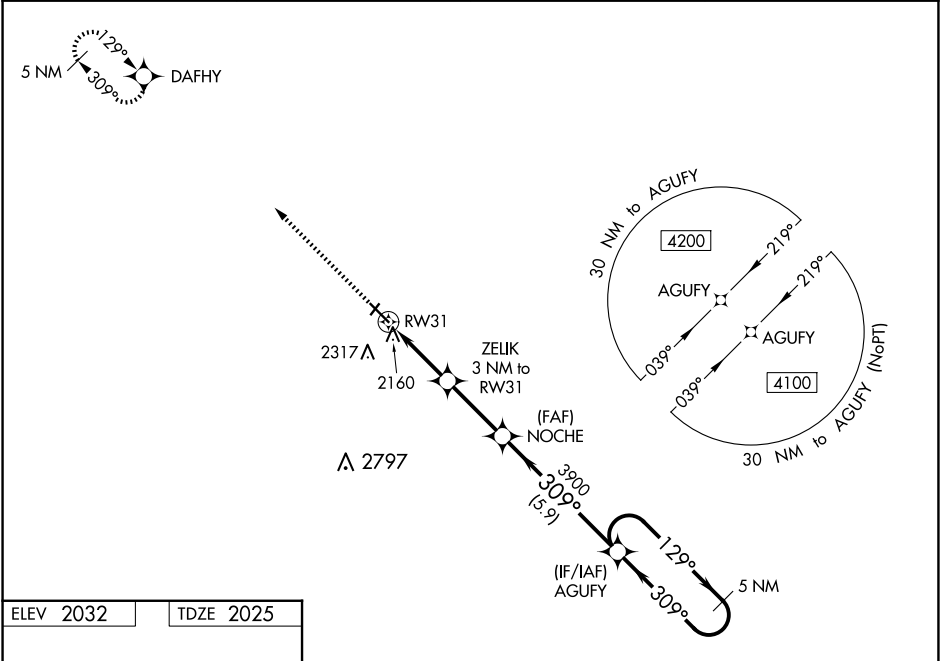
RNAV (GPS) RWY 31

WINNER RGNL (ICR)

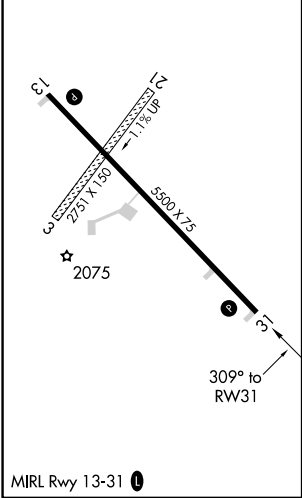
⚠ Circling NA to Rwy's 3 and 21. For uncompensated Baro-VNAV systems, LNAV/VNAV NA below -24° C (-11°F) or above 54°C (130°F). DME/DME RNP-0.3 NA. Baro-VNAV and VDP NA when using Valentine altimeter setting. When local altimeter setting not received, use Valentine, NE altimeter setting and increase LPV DA to 2514, LNAV/VNAV DA to 2549 and all visibilities $\frac{7}{8}$ mile, increase all MDA 240 feet; increase Cat B visibility $\frac{1}{4}$ mile and Cat C 1 mile.

MISSED APPROACH:
Climb to 4100 direct
DAFHY and hold.

ASOS 126.775	MINNEAPOLIS CENTER 125.1 269.1	GCO 121.725	UNICOM 122.8 (CTAF) 0
------------------------	--	-----------------------	---------------------------------



ELEV 2032	TDZE 2025
-----------	-----------



4100	DAFHY	AGUFY	5 NM Holding Pattern	129°	4100	GP 3.00° TCH 32
*LNAV only	ZELIK 3 NM to RW31	NOCHE	3900	309°	3900	
1.1 NM to RW31			3000	309°		
1.1 NM	1.9 NM	2.8 NM	5.9 NM			
CATEGORY	A	B	C	D		
LPV	DA	2275-1	250 (300-1)	NA		
LNAV/VNAV	DA	2310-1	285 (300-1)	NA		
LNAV	MDA	2420-1	395 (400-1)	2420-1 $\frac{1}{8}$ 395 (400-1 $\frac{1}{8}$)	NA	
CIRCLING	2580-1 548 (600-1)	2680-1 648 (700-1)	2680-1 $\frac{3}{4}$ 648 (700-1 $\frac{3}{4}$)	NA		

NC-1, 07 AUG 2025 to 04 SEP 2025

NC-1, 07 AUG 2025 to 04 SEP 2025