

WAAS
CH **61212**
W13A

APP CRS
129°

Rwy Idg
TDZE
Apt Elev
5500
2020
2032

RNAV (GPS) RWY 13

WINNER RGNL (ICR)

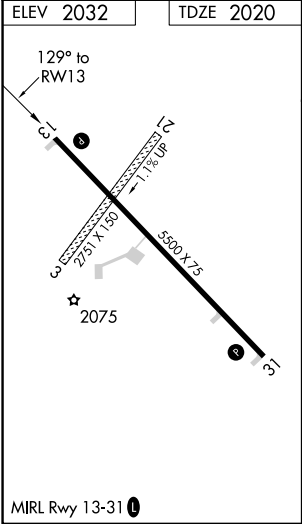
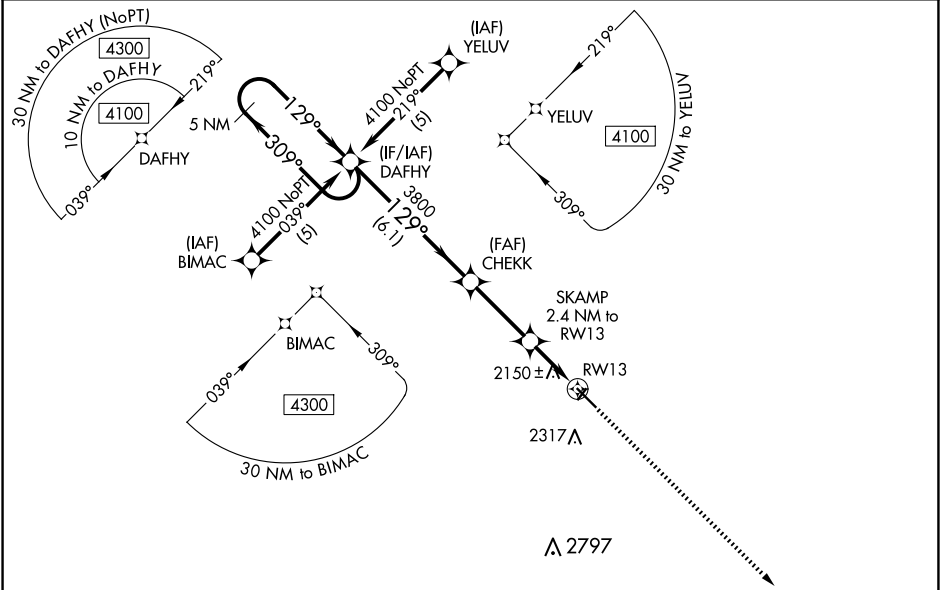
▼

⚠

DME/DME RNP-0.3 NA. For uncompensated Baro-VNAV systems, LNAV/VNAV NA below -19°C (-2°F) or above 54°C (130°F). Baro-VNAV and VDP NA when using Valentine altimeter setting. When local altimeter setting not received, use Valentine, NE altimeter setting and increase all DA/MDA 240 feet; increase LPV all Cats visibility ¾ mile, LNAV/VNAV all Cats visibility 1 mile, LNAV Cat C visibility ¾ mile, Circling Cat B visibility ¼ mile and Cat C visibility 1 mile. Circling NA to Rwy's 3 and 21.

MISSED APPROACH: Climb to 4100 direct AGUFY and hold.

ASOS 126.775	MINNEAPOLIS CENTER 125.1 269.1	GCO 121.725	UNICOM 122.8 (CTAF) 0
------------------------	--	-----------------------	---------------------------------



VGSi and RNAV glidepath not coincident (VGSi Angle 3.00/TCH 38).				4100	AGUFY
5 NM Holding Pattern				↑	✧
DAFHY				*LNAV only	
309°				*1.4 NM to RW13	
129°				RW13	
GP 3.00° TCH 38				*2800	
3800				1 NM	
6.1 NM				1.4 NM	
3 NM					
CATEGORY	A	B	C	D	
LPV DA	2270-1 250 (300-1)			NA	
LNAV/VNAV DA	2456-1½ 436 (500-1½)			NA	
LNAV MDA	2480-1	460 (500-1)	2480-1¼ 460 (500-1¼)	NA	
Ⓢ CIRCLING	2580-1 548 (600-1)	2680-1 648 (700-1)	2680-1¾ 648 (700-1¾)	NA	