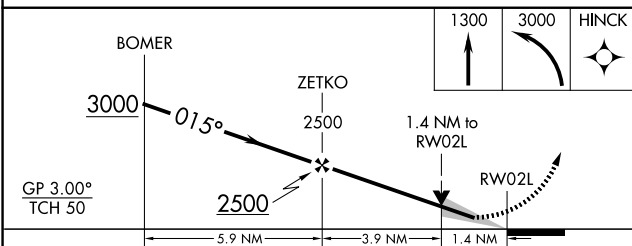
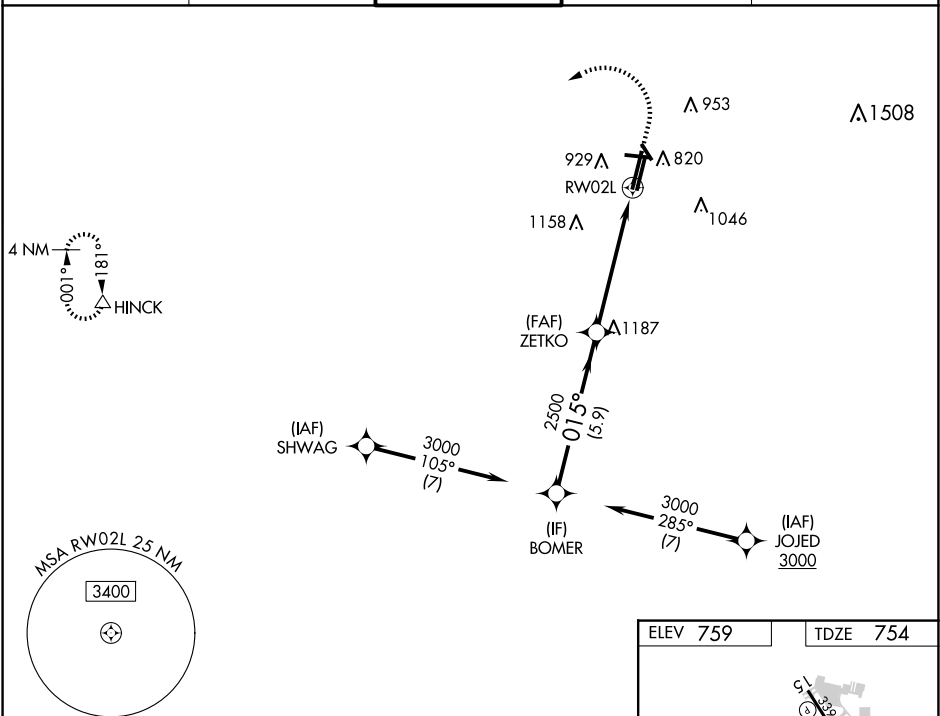


RNAV (GPS) RWY 2L
DUPAGE (DPA)

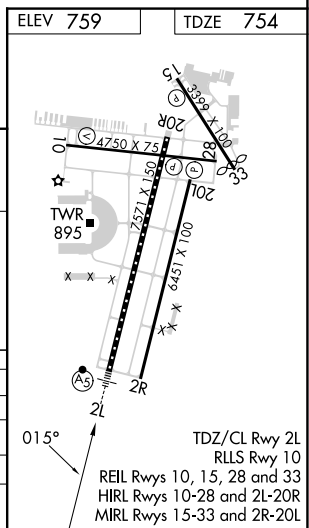
MALSR



MISSED APPROACH: Climb to 1300 then climbing left turn to 3000 direct HINCK and hold.

CLNC DEL
119.75

CATEGORY		A	B	C	D
LPV	DA	954/18		200 (200-½)	
LNNAV/ VNAV	DA	1214/45		460 (500-¾)	
LNNAV	MDA	1260/24	506 (600-½)	1260/55	506 (600-1)
CIRCLING		1260-1 501 (600-1)	1360-1 601 (700-1)	1460-2 701 (800-2)	1460-2¼ 701 (800-2¼)



RNAV (GPS) RWY 2L