

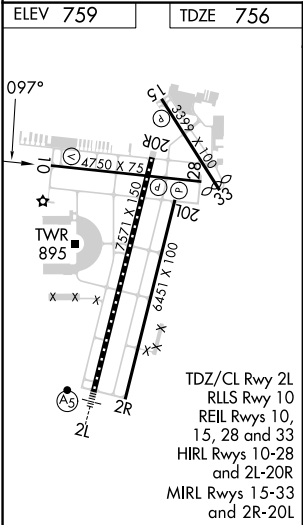
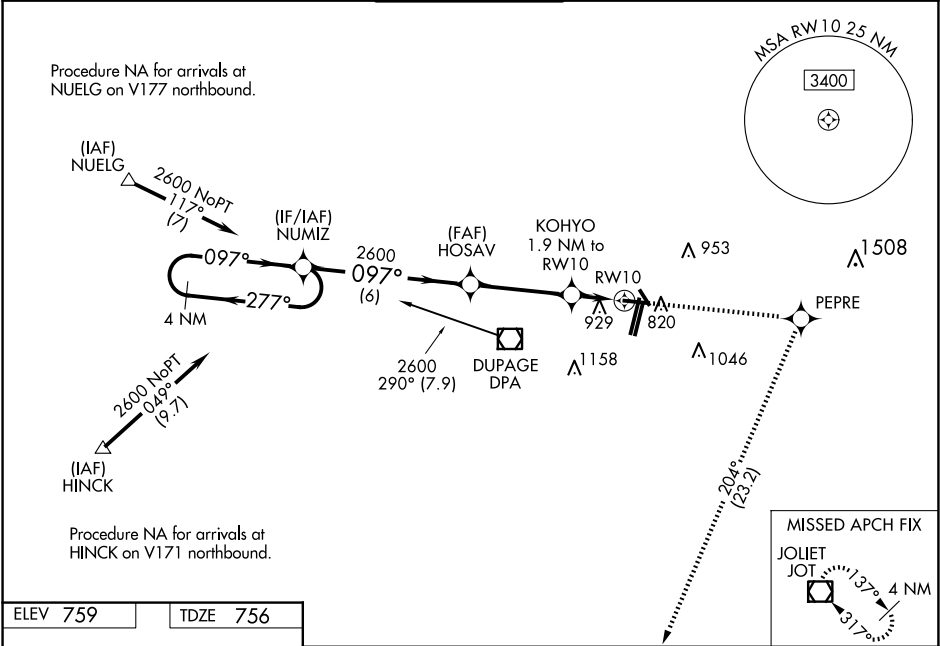
WAAS CH 53618 W10A	APP CRS 097°	Rwy Idg TDZE 756 Apt Elev 759
--	------------------------	---

RNAV (GPS) RWY 10
DUPAGE (DPA)

⚠ For uncompensated Baro-VNAV systems, LNAV/VNAV NA below -16°C (4°F) or above 54°C (130°F). DME/DME RNP-0.3 NA. When local altimeter setting not received, use Aurora altimeter setting: increase LPV DA to 993 feet and LNAV/VNAV DA to 1281; increase all MDA 40 feet and visibility LNAV Cat D and Circling Cat C/D ¼ SM. VDP and Baro-VNAV NA when using Aurora altimeter setting. Circling Rwy 15, 28, 33 NA at night.

MISSED APPROACH: Climb to 2600 direct PEPRE and right turn on track 204° to JOT VOR/DME and hold.

ATIS 132.075	CHICAGO APP CON 133.5 349.0	DUPAGE TOWER 120.9 257.8	GND CON 121.8	CLNC DEL 119.75
------------------------	---------------------------------------	------------------------------------	-------------------------	---------------------------



4 NM Holding Pattern		NUMIZ	HOSAV	KOHYO	PEPRE	JOT
2600 ← 277°		2600	2600	1.9 NM to RW10	2600	2600
GP 3.00°				*1.2 NM to RW10		
TCH 50						
		6 NM	3.7 NM	0.7	1.2 NM	
CATEGORY		A	B	C	D	
LPV DA			956-¾	200 (200-¾)		
LNAV/VNAV DA			1244-1¾	488 (500-1¾)		
LNAV MDA		1180-1	424 (500-1)	1180-1¼	424 (500-1¼)	
CIRCLING		1260-1 501 (600-1)	1360-1 601 (700-1)	1460-2 701 (800-2)	1460-2¼ 701 (800-2¼)	

EC-3, 07 AUG 2025 to 04 SEP 2025

EC-3, 07 AUG 2025 to 04 SEP 2025