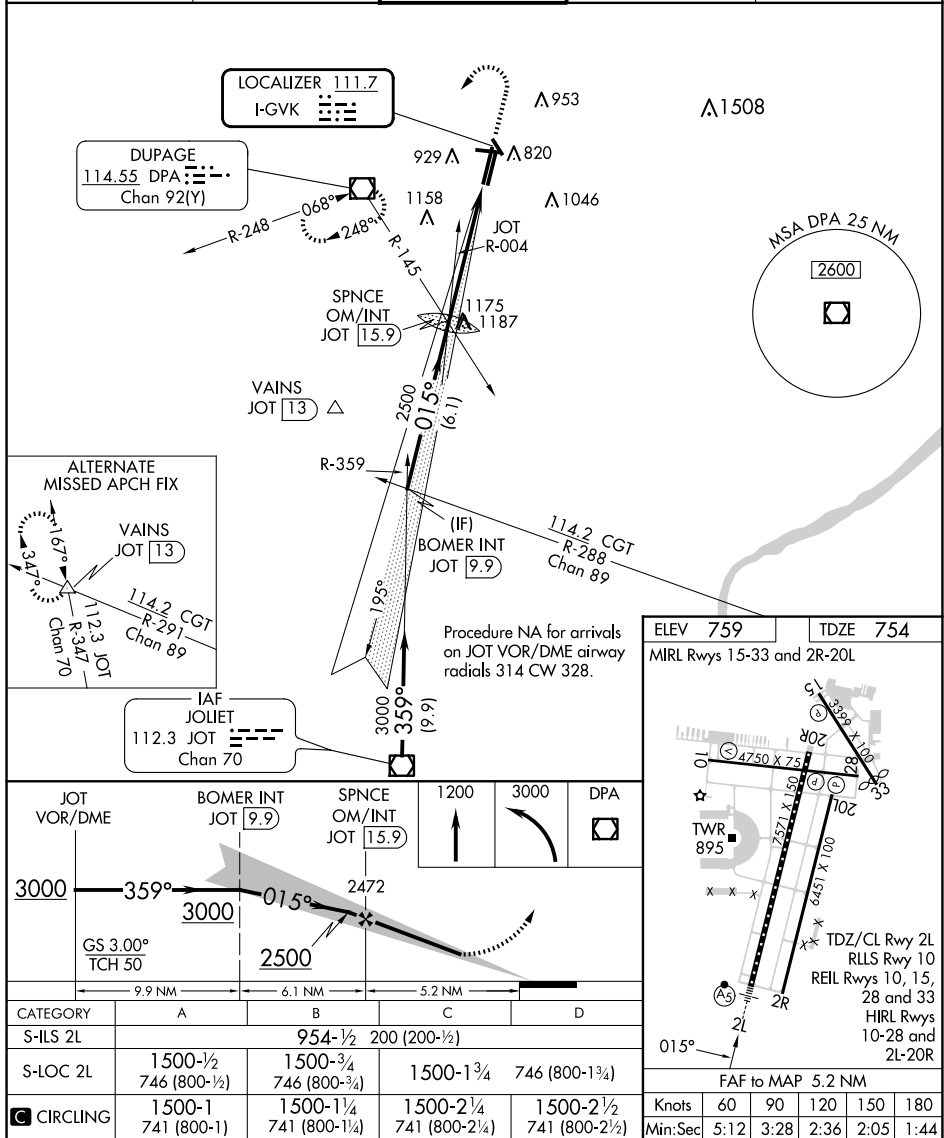


ILS or LOC RWY 2L
DUPAGE (DPA)

MALSR

MISSED APPROACH: Climb to 1200 then climbing left turn to 3000 direct DPA VOR/DME and hold, continue climb-in-hold to 3000.

ATIS 132.075	CHICAGO APP CON 133.5 349.0	DUPAGE TOWER 120.9 257.8	GND CON 121.8	CLNC DEL 119.75
-----------------	--------------------------------	-----------------------------	------------------	--------------------



EC-3, 07 AUG 2025 to 04 SEP 2025