

LOC I-DPA

109.5

APP CRS

097°

Rwy Ldg

4750

TDZE

756

Apt Elev

759

ILS or LOC RWY 10

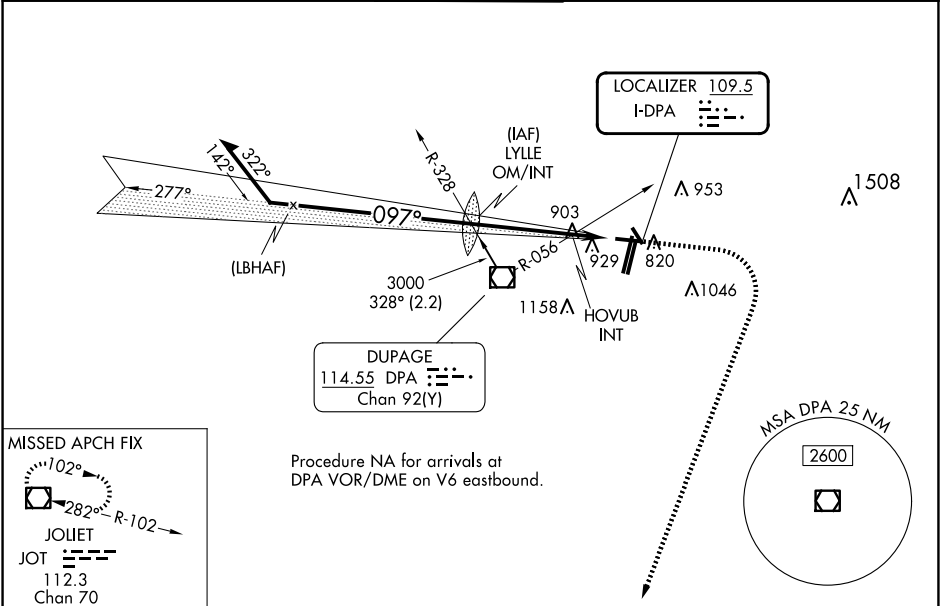
DUPAGE (DPA)

⚠

When local altimeter setting not received, use Chicago/Aurora altimeter setting: increase S-ILS 10 DA to 993 feet; increase all MDA 40 feet and visibility S-LOC 10 Cats C/D and HOVUB INT minimums S-LOC 10 Cats C/D ½ SM, and Circling and HOVUB INT minimums Circling Cats C/D ¼ SM. Circling Rwy 15, 28, 33 NA at night.

MISSED APPROACH: Climb to 1200 then climbing right turn to 2600 direct JOT VOR/DME and hold.

ATIS 132.075	CHICAGO APP CON 133.5 349.0	DUPAGE TOWER 120.9 257.8	GND CON 121.8	CLNC DEL 119.75
-----------------	--------------------------------	-----------------------------	------------------	--------------------



<div>Remain within 10 NM</div> <div><div>3000</div><div>277°</div><div>097°</div><div>2501</div><div>2600</div><div>1300</div><div>3.6 NM</div><div>1.7 NM</div></div> <div>GS 3.00° TCH 50</div> <div>LYLLE OM/INT</div> <div>HOVUB INT</div> <div>JOT</div> <div>ELEV 759</div> <div>TDZE 756</div>					
<div>* LOC only.</div> <div>* 1340 when using Chicago/Aurora altimeter setting.</div>					
CATEGORY	A	B	C	D	
S-ILS 10	956-¾ 200 (200-¾)				
S-LOC 10	1300-1	544 (600-1)	1300-1½	544 (600-1½)	
CIRCLING	1300-1 541 (600-1)	1360-1 601 (700-1)	1460-2 701 (800-2)	1460-2¼ 701 (800-2¼)	
HOVUB INT MINIMUMS (DUAL VOR RECEIVERS REQUIRED)					
S-LOC 10	1220-1	464 (500-1)	1220-1¾	464 (500-1¾)	
CIRCLING	1260-1 501 (600-1)	1360-1 601 (700-1)	1460-2 701 (800-2)	1460-2¼ 701 (800-2¼)	
FAF to MAP 5.3 NM					
Knots	60	90	120	150	180
Min:Sec	5:18	3:32	2:39	2:07	1:46