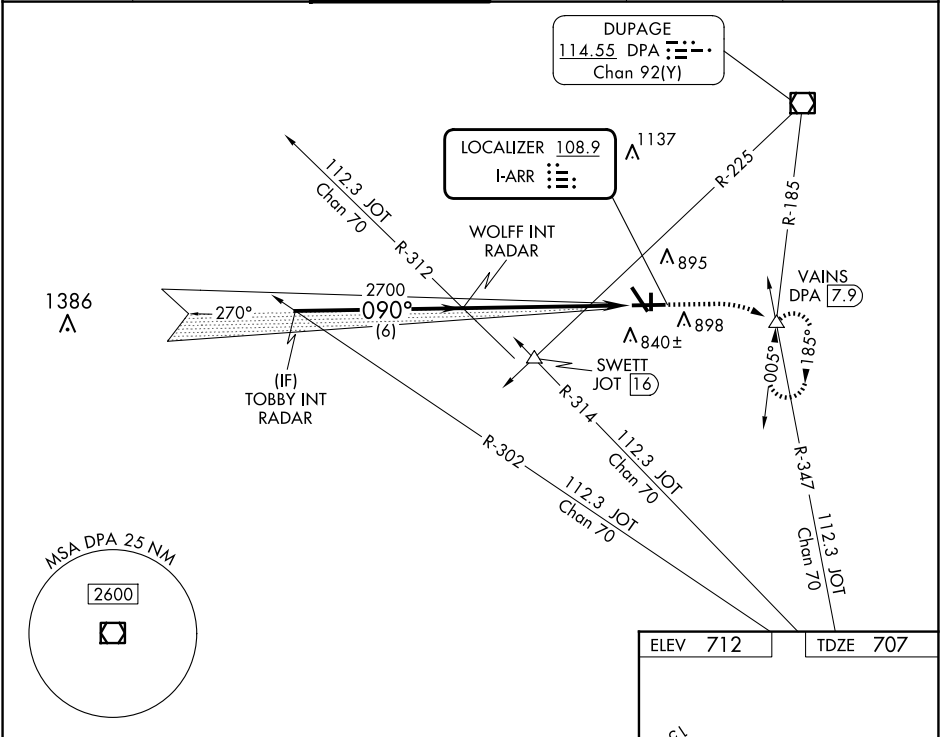


LOC I-ARR 108.9	APP CRS 090°	Rwy Ldg TDZE Apt Elev 6501 707 712
---------------------------	------------------------	--

ILS or LOC RWY 9

AURORA MUNI (ARR)

RADAR required for procedure entry.			MALSRR	MISSED APPROACH: Climb to 1200 then climbing right turn to 3000 on heading 090° and on DPA VOR/DME R-185 to VAINS INT/DPA 7.9 DME and hold, continue climb-in-hold to 3000.	
For inop ALS, increase S-LOC 9 Cat C/D visibilities to 1½ SM.					
ATIS 125.85	CHICAGO APP CON 133.5 349.0	AURORA TOWER ★ 120.6 (CTAF)	GND CON 121.7	CLNC DEL 121.7 (When tower closed)	UNICOM 122.95 123.5



CATEGORY A B C D			
S-ILS 9	907-½ 200 (200-½)		
S-LOC 9	1220-½ 513 (600-½)		1220-1 513 (600-1)
CIRCLING	1220-1 508 (600-1)		1300-1½ 588 (600-1½) 1320-2 608 (700-2)

