

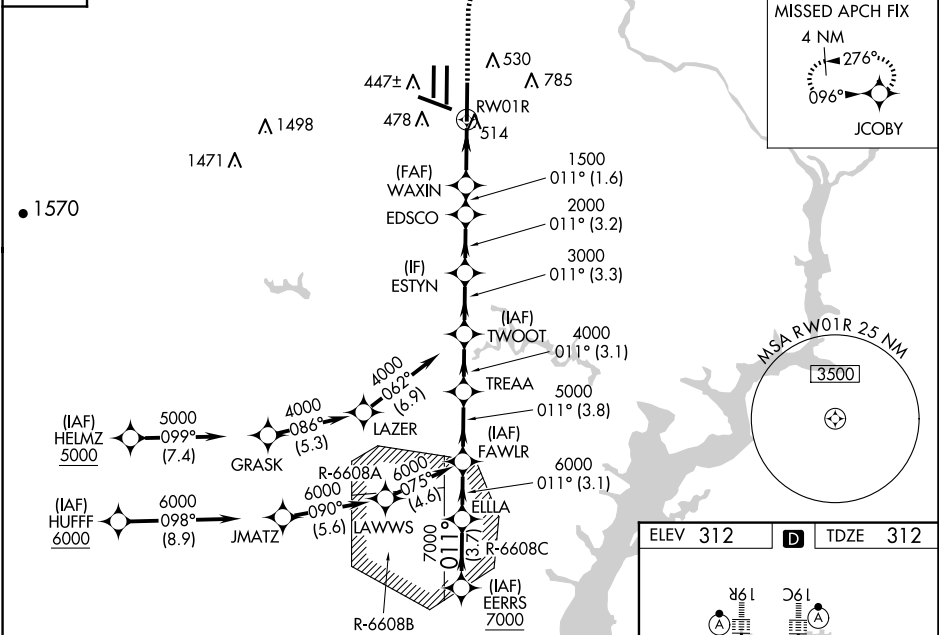
WAAS CH 56409 W01A	APP CRS 011°	Rwy ldg 11500 TDZE 312 Apt Elev 312
--	------------------------	--

RNAV (GPS) Y RWY 1R
WASHINGTON DULLES INTL (IAD)

RNP APCH - GPS.	ALSF-2	MISSED APPROACH: Climb to 780, then climbing right turn to 3000 direct JCOBY and hold.
For uncompensated Baro-VNAV systems, LNAV/VNAV NA below -13°C or above 54°C. Simultaneous approach authorized. LNAV procedure NA during simultaneous operations. Use of FD or AP required during simultaneous operations. For inop ALS, increase LNAV/VNAV all Cats visibility to RVR 6000 and LNAV Cat C/D visibility to 1 1/2 SM.		

POTOMAC APP CON 120.45 306.925 (241°-330°) 128.525 306.925 (091°-240°) 126.1 338.25 (331°-090°)	DULLES TOWER 120.1 317.8 (Rwy 1R/19L) 120.25 348.6 (Rwy 1C/19C) 134.425 348.6 (Rwys 1L/19R and 12/30)	GND CON 121.9 317.8 (EAST) 121.625 348.6 (WEST)	CLNC DEL 135.7 317.8
---	---	---	--------------------------------

D-ATIS 134.85	CPDLC
-------------------------	-------



VGSI and RNAV glidepath not coincident (VGSI Angle 3.00/TCH 72).						780	3000	JCOBY
EERRS	ELLA	FAWLR	TREA	TWOOT	ESTYN	EDSCO	WAXIN	RW01R
7000	011°	7000	6000	5000	4000	3000	2000	1500
GP 3.00°								
TCH 55								
	3.7 NM	3.1 NM	3.8 NM	3.1 NM	3.3 NM	3.2 NM	1.6 NM	2.3 NM
CATEGORY	A	B	C	D				
LPV DA	512/18				200 (200-½)			
LNAV/ VNAV DA	728/40				416 (500-¾)			
LNAV MDA	780/24		468 (500-½)		780/50		468 (500-1)	
CIRCLING	940-1		628 (700-1)		940-1¾ 628 (700-1¾)		1180-2¾ 868 (900-2¾)	

TDZ/CL Rwy 1C, 1L, 1R, 12, 19C and 19R

REIL Rwy 30

HIRL all Rwy