

WAAS CH 97509 W01B	APP CRS 011°	Rwy Idg 11500 TDZE 286 Apt Elev 312
--	------------------------	--

RNAV (GPS) Y RWY 1C
WASHINGTON DULLES INTL (IAD)

RNP APCH - GPS	
----------------	--

V For uncompensated Baro-VNAV systems, LNAV/VNAV NA below -13°C or above 54°C.
A Use of FD or AP required during simultaneous operations. LNAV procedure NA during simultaneous operations. Simultaneous approach authorized. For inop ALS, increase LNAV/VNAV all Cots visibility to 1% SM. Increase LNAV Cat C/D visibility to 1/4 SM.


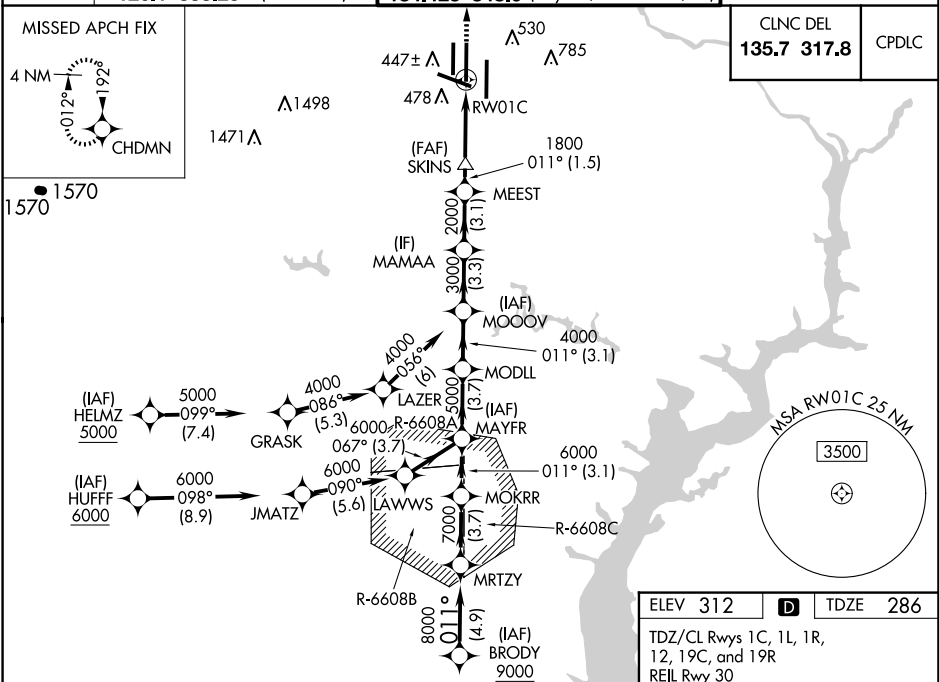
MALSR



MISSED APPROACH:
Climb to 4000 direct
CHDMN and hold,
continue climb-in-hold
to 4000.

D-ATIS	POTOMAC APP CON	DULLES TOWER	GND CON
120.45	306.925 (241°-330°)	120.1 317.8 (Rwy 1R/19L)	121.9 317.8 (EAST)
134.85	128.525 306.925 (091°-240°)	120.25 348.6 (Rwy 1C/19C)	121.625 348.6 (WEST)
	126.1 338.25 (331°-090°)	134.425 348.6 (Rwys 1L/19R and 12/30)	

MISSED APCH FIX



ELEV 312	D	TDZE 286
TDZ/CL Rwy 1C, 1L, 1R, 12, 19C, and 19R REIL Rwy 30 HIRL all Rwy		

