

WAAS CH 86709 W19D	APP CRS 191°	Rwy Idg 9400 TDZE 278 Apt Elev 312
--	------------------------	---

RNAV (GPS) Y RWY 19R
WASHINGTON DULLES INTL (IAD)

RNP APCH - GPS.

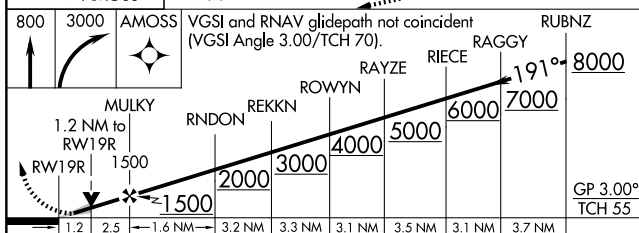
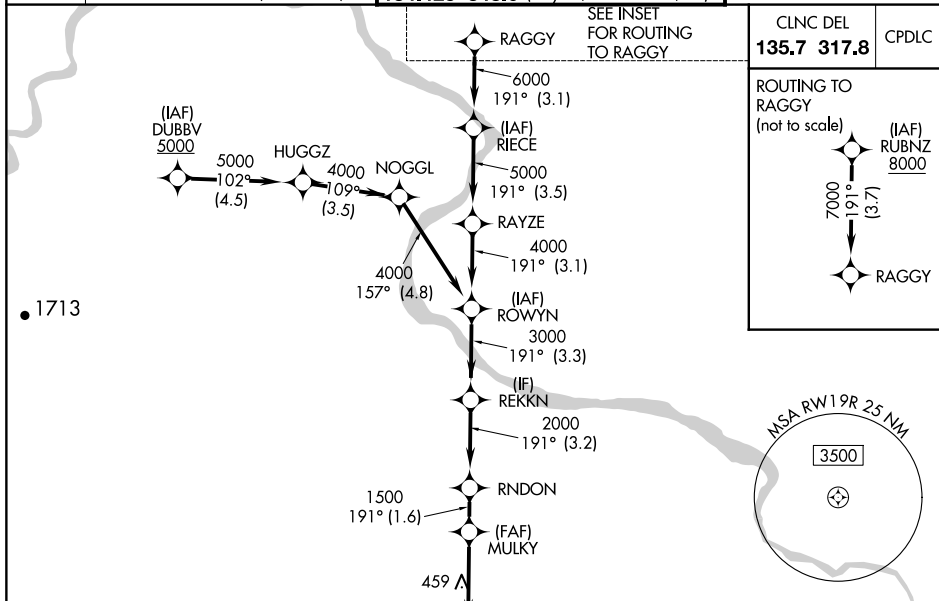
T For uncompensated Baro-VNAV systems, LNAV/VNAV NA below -13°C or above 54°C. Simultaneous approach authorized. LNAV procedure NA during simultaneous operations. Use of FD or AP required during simultaneous operations.

ALSF-2



MISSED APPROACH: Climb to 800 then climbing right turn to 3000 direct AMOSS and hold

	POTOMAC APP CON	DULLES TOWER	GND CON
D-ATIS	120.45 306.925 (241°-330°)	120.1 317.8 (Rwy 1R/19L)	121.9 317.8 (EAST)
134.85	128.525 306.925 (091°-240°)	120.25 348.6 (Rwy 1C/19C)	121.625 348.6 (WEST)
	126.1 338.25 (331°-090°)	134.425 348.6 (Rwy 1L/19R and 12/30)	



CATEGORY		A	B	C	D
LPV	DA	478/18		200 (200-½)	
INAV/ VNAV	DA	708/40		430 (400-¾)	
INAV	MDA	720/24	442 (500-½)	720/45	442 (500-¾)
CIRCLING		940-1	628 (700-1)	940-1¾ 628 (700-1¾)	1180-2¾ 868 (900-2¾)

