

WAAS CH <b>40305</b> <b>W19B</b>	APP CRS <b>191°</b>	Rwy Idg <b>11089</b> TDZE <b>272</b> Apt Elev <b>312</b>
--	------------------------	--

RNAV (GPS) Y RWY 19C  
WASHINGTON DULLES INTL (IAD)

RNP APCH - GPS.

**T** Simultaneous approach authorized. LNAV procedure NA during simultaneous operations.  
**A** Use of FD or AP required during simultaneous operations. For uncompensated Baro-VNAV systems, LNAV/VNAV NA below -13°C or above 54°C.

ALSF-2

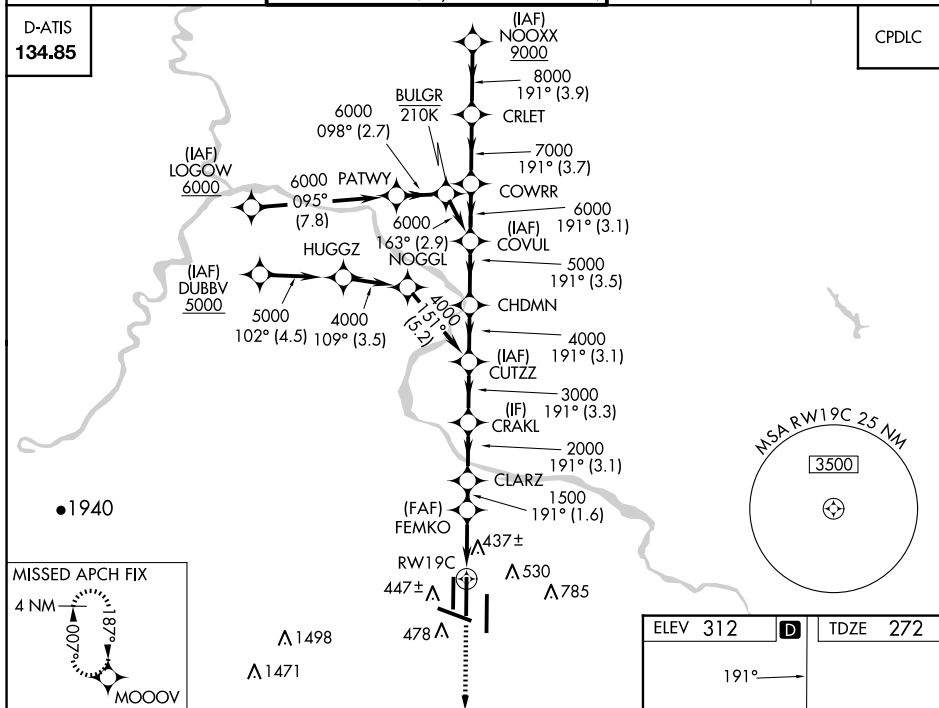


**MISSED APPROACH:**  
Climb to 3000 direct  
MOOOV and hold.

POTOMAC APP CON	DULLES TOWER	GND CON	CLNC DEL
<b>120.45 306.925</b> (241°-330°)	<b>120.1 317.8</b> (Rwy 1R/19L)	<b>121.9 317.8</b> (EAST)	<b>135.7 317.8</b>
<b>128.525 306.925</b> (091°-240°)	<b>120.25 348.6</b> (Rwy 1C/19C)	<b>121.625 348.6</b> (WEST)	
<b>126.1 338.25</b> (031°-090°)	<b>134.425 348.6</b> (Rwys 1L/19R and 12/30)		

D-ATIS  
134.85

CPDLC



		MOOOVV VGS1 and RNAV glidepath not coincident (VGS1 Angle 3.00/TCH 72).		NOOXXX CRLET	
3000 ↑		MOOOVV 		NOOXXX CRLET	
1.1 NM to RW19C RW19C		FEMKO 1500 1.6 NM		CLARZ 2000 3.1 NM	
1.1 2.6 NM		CRAKL 3000 3.3 NM		CUTZZ 4000 3.1 NM	
1.1 2.6 NM		CHDMN 5000 3.5 NM		COVUL 6000 3.1 NM	
1.1 2.6 NM		COWRR 7000 3.7 NM		CRLET 8000 3.9 NM	
CATEGORY LPV DA		A 472/18 200 (200-½)		D 700/40 428 (400-¾)	
LNAV/ VNAV DA		700/24 428 (400-½)		700/40 428 (400-¾)	
LNAV MDA		700/24 428 (400-½)		700/40 428 (400-¾)	
CIRCLING		940-1 628 (700-1)		940-1¾ 628 (700-1¾) 1180-2¾ 868 (900-2¾)	

