


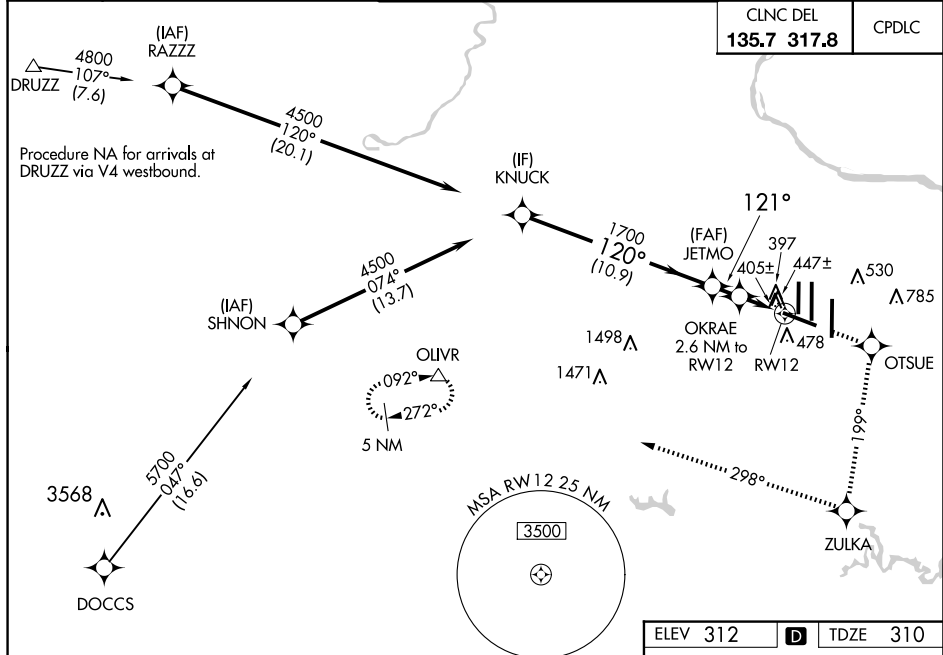


WAAS CH <b>86310</b> <b>W12A</b>	APP CRS <b>121°</b>	Rwy Idg <b>10501</b> TDZE <b>310</b> Apt Elev <b>312</b>
--	------------------------	--

RNAV (GPS) RWY 12  
WASHINGTON DULLES INTL (IAD)

RNP APCH - GPS.		MALSR 		MISSED APPROACH: Climb to 5000 direct OTSUE and on track 199° to ZULKA and right turn on track 298° to OLIVR and hold.	
 For inop ALS, increase LNAV Cats C/D visibility to RVR 6000.  For uncompensated Baro-VNAV systems, LNAV/VNAV NA below -15°C or above 48°C.					
D-ATIS <b>134.85</b>	POTOMAC APP CON <b>120.45 306.925</b> (241°-330°) <b>128.525 306.925</b> (091°-240°) <b>126.1 338.25</b> (331°-090°)	DULLES TOWER <b>120.1 317.8</b> (Rwy 1R/19L) <b>120.25 348.6</b> (Rwy 1C/19C) <b>134.425 348.6</b> (Rwys 1L/19R and 12/30)		GND CON <b>121.9 317.8</b> (EAST) <b>121.625 348.6</b> (WEST)	
(IAF) DA-377				CLNC DEL <b>135.7 317.8</b>	CPDLC



VGS1 and RNAV glidepath not coincident (VGS1 Angle 3.00°/TCH 66).		5000 ↑	OTSUE ✦	tr 199°	ZULKA ✦	tr 298° ↷	OLIVR △
CATEGORY	A	B	C	D			
LPV DA	510/18		200 (200-½)				
RNAV/ VNAV DA	737/50		427 (500-1)				
RNAV MDA	720/24	410 (500-½)	720/40	410 (500-¾)			
CIRCLING	940-1	628 (700-1)	940-1¾ 628 (700-1¾)	1180-2¾ 868 (900-2¾)			

