

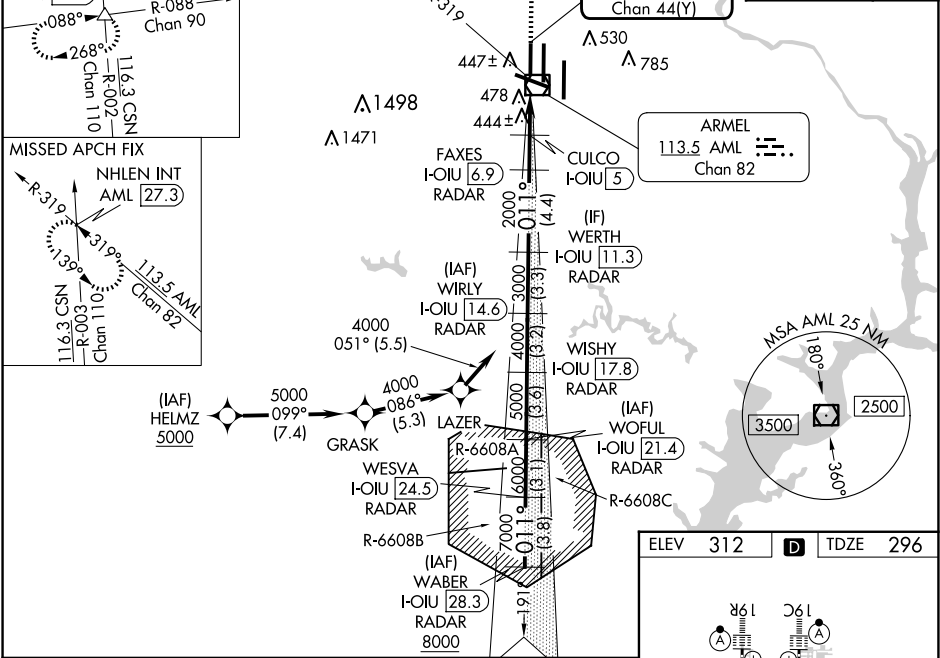
LOC/DME I-OIU 110.75 Chan 44 (Y)	APP CRS 011°	Rwy Idg TDZE Apt Elev	9400 296 312
--	------------------------	-----------------------------	---


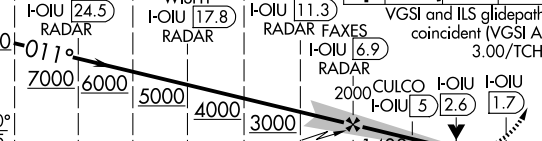
ILS or LOC RWY 1L
WASHINGTON DULLES INTL (IAD)

RNP APCH - GPS. From HELMZ. DME or RADAR required. DME required for LOC only. RADAR required for procedure entry at WABER.	ALSF-2 	MISSED APPROACH: Climb to 800 then climbing left turn to 3000 on heading 276° and on AML VOR/DME R-319 to NHLEN INT/AML 27.3 DME and hold.
Simultaneous approach authorized. For inop ALS, increase LOC Cats C/D visibility to RVR 5500.		

D-ATIS 134.85	POTOMAC APP CON 120.45 306.925 (241°-330°) 128.525 306.925 (091°-240°) 126.1 338.25 (331°-090°)	DULLES TOWER 120.1 317.8 (Rwy 1R/19L) 120.25 348.6 (Rwy 1C/19C) 134.425 348.6 (Rwys 1L/19R and 12/30)	GND CON 121.9 317.8 (EAST) 121.625 348.6 (WEST)
-------------------------	---	---	---

ALTERNATE MISSED APCH FIX OLIVR LDN 14.9 R-088 Chan 90 116.3 CSN R-002 Chan 110 114.3 LDN R-088 Chan 90	CLNC DEL 135.7 317.8	CPDLC
--	--------------------------------	-------



WABER I-OIU 28.3 RADAR	WOFUL I-OIU 21.4 RADAR	WIRLY I-OIU 14.6 RADAR			AML R-319	NHLEN INT			
WESVA I-OIU 24.5 RADAR	WISHY I-OIU 17.8 RADAR	WERTH I-OIU 11.3 RADAR	VGSI and ILS glidepath not coincident (VGSI Angle 3.00/TCH 70).						
8000 071°	7000 6000 5000 4000 3000	2000 1400							
GS 3.00° TCH 55	3.8 NM	3.1 NM	3.6 NM	3.2 NM	3.3 NM	4.4 NM	1.9 NM	2.4	0.9
CATEGORY	A		B		C		D		
S-ILS 1L	496/18 200 (200-½)								
S-LOC 1L	660/24 364 (400-½)			660/35 364 (400-¾)					
CIRCLING	940-1 628 (700-1)			940-1¾ 628 (700-1¾)			1180-2¾ 868 (900-2¾)		

