
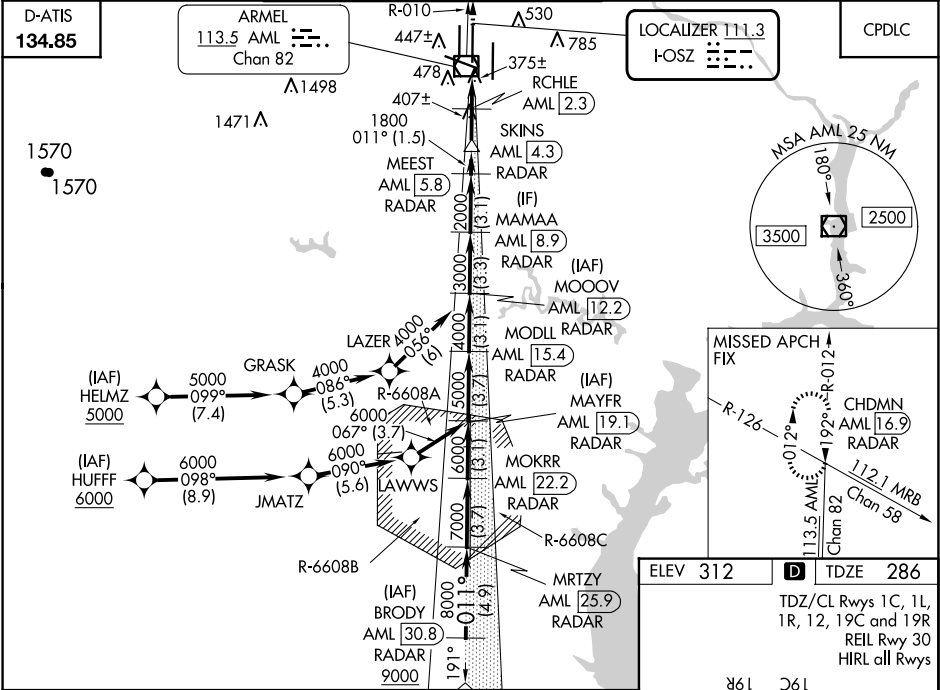


LOC I-OSZ 111.3	APP CRS 011°	Rwy ldg 11500 TDZE 286 Apt Elev 312
---------------------------	------------------------	--

ILS or LOC RWY 1C
WASHINGTON DULLES INTL (IAD)

RNP APCH-GPS. From HELMZ or HUFF.		<div>MALSR</div> <div></div>	<div>MISSED APPROACH: Climb to 4000 on AML VOR/DME R-010 to CHDMN/AML 16.9 DME/RADAR and hold, continue climb-in-hold to 4000.</div>		
DME or RADAR required. RADAR required for procedure entry at BRODY.					
<div><div>▼</div><div>▲</div></div> <td colspan="2">Simultaneous approach authorized. DME on AML VOR/DME. DME use requires simultaneous reception of I-OSZ and AML DME. For inop ALS, increase S-LOC Cats C/D visibility to RVR 5500.</td>	Simultaneous approach authorized. DME on AML VOR/DME. DME use requires simultaneous reception of I-OSZ and AML DME. For inop ALS, increase S-LOC Cats C/D visibility to RVR 5500.				
<div>POTOMAC APP CON</div> <div><div>120.45 306.925 (241°-330°)</div><div>128.525 306.925 (091°-240°)</div><div>126.1 338.25 (331°-090°)</div></div>		<div>DULLES TOWER</div> <div><div>120.1 317.8 (Rwy 1R/19L)</div><div>120.25 348.6 (Rwy 1C/19C)</div><div>134.425 348.6 (Rwys 1L/19R and 12/30)</div></div>		<div>GND CON</div> <div><div>121.9 317.8 (EAST)</div><div>121.625 348.6 (WEST)</div></div>	<div>CLNC DEL</div> <div><div>135.7 317.8</div></div>



BRODY AML [30.8] RADAR		MOKRR AML [22.2] RADAR		MODLL AML [15.4] RADAR		MAMAA AML [8.9] RADAR		4000 AML R-010		CHDMN AML [16.9] RADAR	
RADAR		MAYFR AML [19.1] RADAR		MOOOV AML [12.2] RADAR		MEEST AML [5.8] RADAR		SKINS AML [4.3] RADAR		AML VOR/DME	
RADAR		RADAR		RADAR		RADAR		RADAR		RADAR	
GS 3.00° TCH 54		7000		6000		5000		4000		3000	
VGSI and ILS glidepath not coincident (VGSI Angle 3.00/TCH 70).											
4.9 NM		3.7 NM		3.1 NM		3.1 NM		3.1 NM		1.5 NM	
CATEGORY A		CATEGORY B		CATEGORY C		CATEGORY D					
S-ILS 1C		486/18		200 (200-½)							
S-LOC 1C		640/24		354 (400-½)		640/30		354 (400-¾)			
CIRCLING		940-1		628 (700-1)		940-1¾ 628 (700-1¾)		1180-2¾ 868 (900-2¾)			

