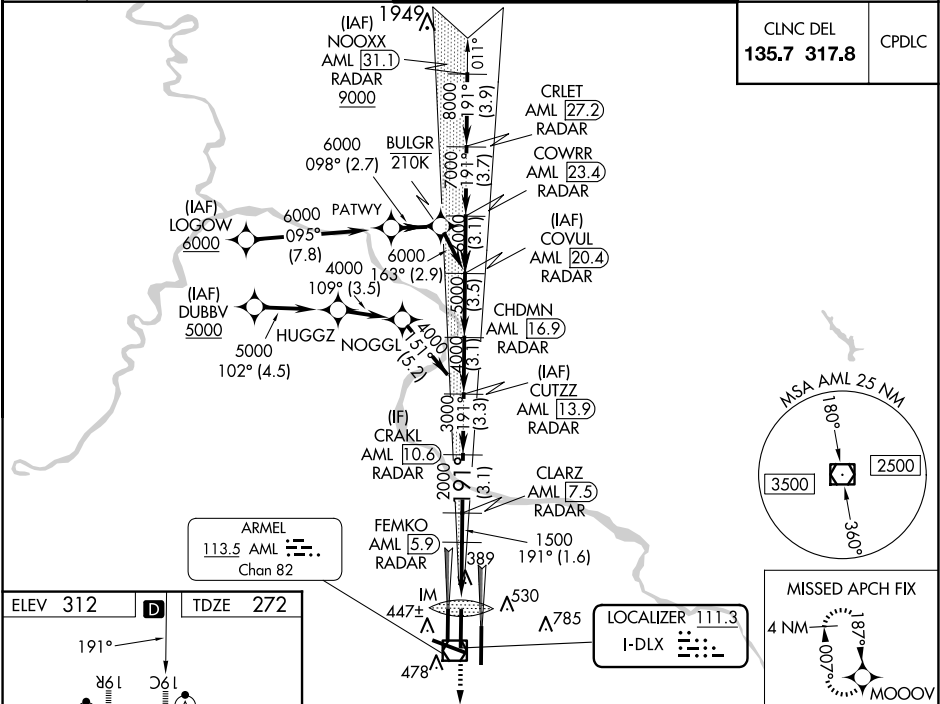


LOC I-DLX	APP CRS	Rwy Idg	11089
111.3	191°	TDZE	272
		Apt Elev	312

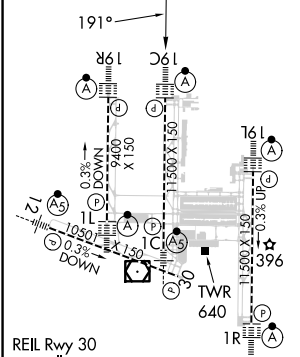
ILS or LOC RWY 19C
WASHINGTON DULLES INTL (IAD)

RNP APCH - GPS.	ALSIF-2	MISSED APPROACH: Climb to 3000 direct MOOOV and hold.
RADAR required for procedure entry at NOOXX. DME or RADAR required.		
Simultaneous approach authorized. DME from AML VOR/DME. DME use requires simultaneous reception of I-DLX and AML DME. For inop ALS, increase S-LOC 19C Cat C and D visibility to RVR 5500.		

D-ATIS	POTOMAC APP CON	DULLES TOWER	GND CON
134.85	120.45 306.925 (241°-330°)	120.1 317.8 (Rwy 1R/19L)	121.9 317.8 (EAST)
	128.525 306.925 (091°-240°)	120.25 348.6 (Rwy 1C/19C)	121.625 348.6 (WEST)
	126.1 338.25 (331°-090°)	134.425 348.6 (Rwys 1L/19R and 12/30)	



ELEV 312	TDZE 272
----------	----------



HIRL all Rwy's TDZ/CL Rwy's 1C, 1L, 1R, 12, 19C and 19R					
FAF to MAP 3.7 NM					
Knots	60	90	120	150	180
Min:Sec	3:42	2:28	1:51	1:29	1:14

3000 ↑	MOOOV ✧	VGSI and ILS glidepath not coincident (VGSI Angle 3.00/TCH 72).				CRLET AML 27.2 RADAR	NOOXX AML 31.1 RADAR					
		FEMKO AML 5.9 RADAR	CLARZ AML 7.5 RADAR	CRACKL AML 10.6 RADAR	CUTZZ AML 13.9 RADAR	CHDMN AML 16.9 RADAR	COVUL AML 20.4 RADAR	COWRR AML 23.4 RADAR	191°	9000		
		AML 2.2	AML 3.1	500	2000	3000	4000	5000	6000	7000	8000	
		IM	✧	1500							GS 3.00° TCH 54	
		0.2	0.7	2.8	1.6 NM	3.1 NM	3.3 NM	3.1 NM	3.5 NM	3.1 NM	3.7 NM	3.9 NM
CATEGORY		A			B			C			D	
S-ILS 19C		472/18					200 (200-½)					
S-LOC 19C		640/24 368 (400-½)					640/35			368 (400-½)		
CIRCLING		940-1 628 (700-1)					940-1¾ 628 (700-1¾)			1180-2¾ 868 (900-2¾)		

NE-3, 07 AUG 2025 to 04 SEP 2025

NE-3, 07 AUG 2025 to 04 SEP 2025