

ILS RWY 1L (CAT II & III)
WASHINGTON DULLES INTL (IAD)

MISSED APPROACH: Climb to 800 then climbing left turn to 3000 on heading 276° and on AML VOR/DME R-319 to NHLEN INT/AML 27.3 DME and hold.



RADAR required for procedure entry at WABER.

T Simultaneous approach authorized.

GND CON
121.9 317.8 (EAST)
21.625 348.6 (WEST)

LOCALIZER 110.75

CLNC DEL
135.7 317.8

CPDLC

MISSED APCH FIX

NHLEN INT
AML 27.3

R-319

139°

116.3 CSN

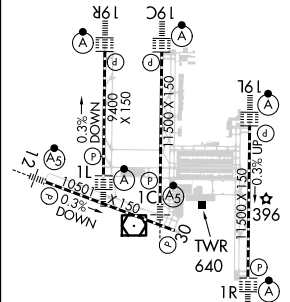
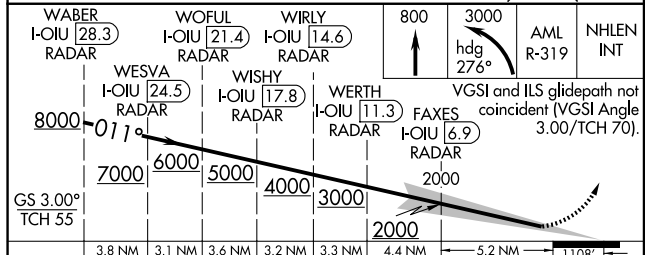
R-003

Chan 110

113.5 AML

Chan 82

ELEV	312	D	TDZE	296
------	-----	----------	------	-----



CATEGORY	A	B	C	D
S-ILS 1L	CAT II RA 97/12 100 DA 396			
S-ILS 1L	CAT III RVR 06			

TDZ/CL Rwy 1C, 1L,
1R, 12, 19C and 19R
REIL Rwy 30
HIRL all Rwys

CATEGORY II & III ILS - SPECIAL AIRCREW
& AIRCRAFT CERTIFICATION REQUIRED