

LOC I-OSZ <u>111.3</u>	APP CRS 011°	Rwy Idg 11500 TDZE 286 Apt Elev 312
----------------------------------	------------------------	--

ILS RWY 1C (SA CAT II)
WASHINGTON DULLES INTL (IAD)

RNP APCH-GPS. From HELMZ or HUFFF.

DME or RADAR required.
RADAR required for procedure entry at BRODY.

T Simultaneous approach authorized. DME from AML VOR/DME. DME use requires simultaneous reception of I-OSZ and AML DME. Requires specific OPSPEC, MSPEC, or LOA approval.

MALSR



MISSED APPROACH: Climb to 4000 on AML VOR/DME R-010 to CHDMN/AML 16.9 DME/RADAR and hold, continue climb-in-hold to 4000.

POTOMAC APP CON
120.45 306.925 (241°-330°)
128.525 306.925 (091°-240°)
126.1 338.25 (331°-090°)

DULLES TOWER		
120.1	317.8	(Rwy 1R/19L)
120.25	348.6	(Rwy 1C/19C)
134.425	348.6	(Rwys 1L/19R and 12/30)

GND CON
121.9 317.8 (EAST)
121.625 348.6 (WEST)

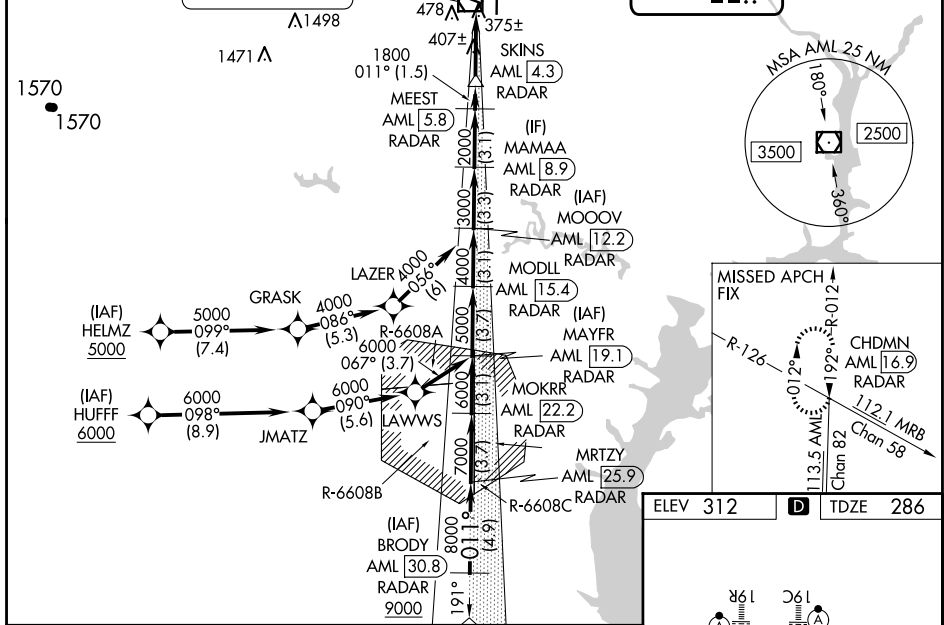
CLNC DEL
35.7 317.8

D-ATIS
134 85

ARMEL
113.5 AML $\frac{11}{11} \dots$
Chan 82

LOCALIZER 111.3
I-OSZ ---

CPDLC



ELEV 312	D	TDZE 286
----------	----------	----------

SA CATEGORY II ILS - SPECIAL AIRCREW
& AIRCRAFT CERTIFICATION REQUIRED

TDZ/CL Rwy 1C, 1L,
1R, 12, 19C and 19R
REIL Rwy 30
HRL all Rwys