

LOC/DME I-SU 110.75 Chan 44 (Y)	APP CRS 191°	Rwy Idg 9400 TDZE 278 Apt Elev 312
---	------------------------	---

ILS RWY 19R (CAT II & III)
WASHINGTON DULLES INTL (IAD)

RNP APCH-GPS. From DUBBV.

DME or RADAR required. RADAR required for procedure entry at RUBNZ.

T Simultaneous approach authorized.

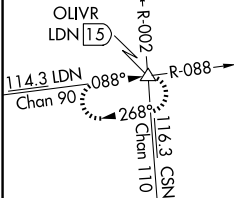
ALCE 2




MISSED APPROACH: Climb to 800 then climbing right turn to 3000 on heading 280° and AML VOR/DME R-264 to AMOSS INT/AML 20.4 DME and hold.

D-ATIS	POTOMAC APP CON	DULLES TOWER	GND CON
120.45	306.925 (241°-330°)	120.1 317.8 (Rwy 1R/19L)	121.9 317.8 (EAST)
134.85	128.525 306.925 (091°-240°)	120.25 348.6 (Rwy 1C/19C)	121.625 348.6 (WEST)
	126.1 338.25 (331°-090°)	134.425 348.6 (Rwys 1L/19R and 12/30)	

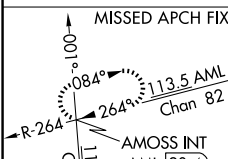
ALTERNATE MISSED
APCH FIX



CLNC DEL

35,7 317,8

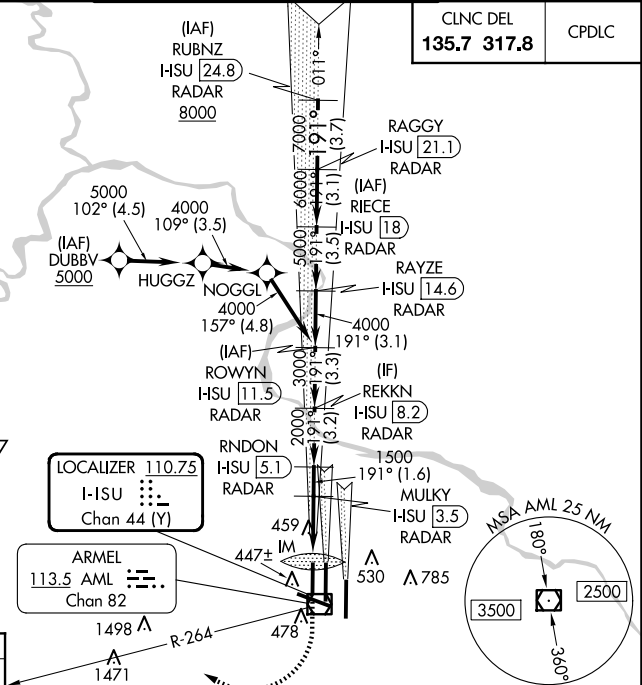
CPDLC



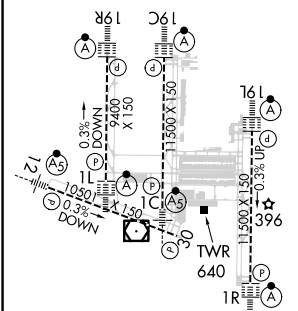
Λ 1787

LOCALIZER 110.75
I-ISU
Chan 44 (Y)

ARME
3.5 AML
Chap 82



ELEV	312	D	TDZE	278
------	-----	----------	------	-----



TDZ/CL Rwys 1C, 1L,
1R, 12, 19C and 19R
REIL Rwy 30
HIRL all Rwys

[illegible]

CATEGORY II & III ILS - SPECIAL AIRCREW
& AIRCRAFT CERTIFICATION REQUIRED