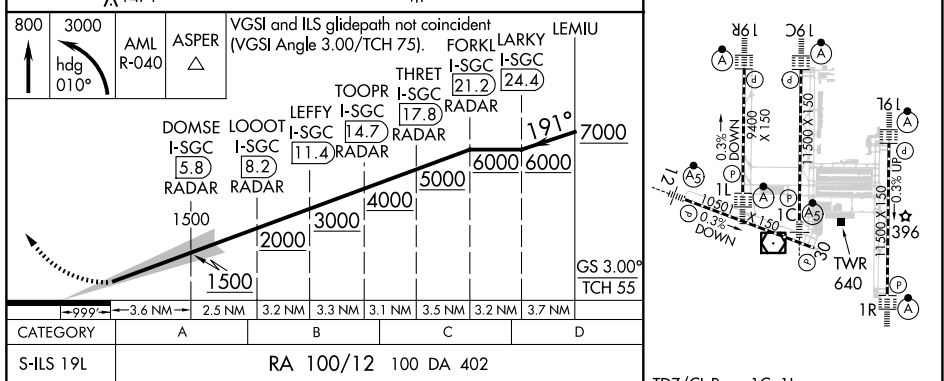


ILS RWY 19L (SA CAT II)
WASHINGTON DULLES INTL (IAD)

MISSED APPROACH: Climb to 800 then climbing left turn to 3000 on heading 010° and on AML VOR/DME R-040 to ASPER INT/AML 14.7 DME and hold.




D-ATIS 134.85	LARKY I-SGC 24.4	SEE INSET FOR ROUTING	MSA AML 25 NM 180°	CPDLC
-------------------------	----------------------------	--------------------------	-----------------------	-------



TDZ/CL Rwy 1C, 1L,
1R, 12, 19C and 19R
REIL Rwy 30
HRL all Rwys