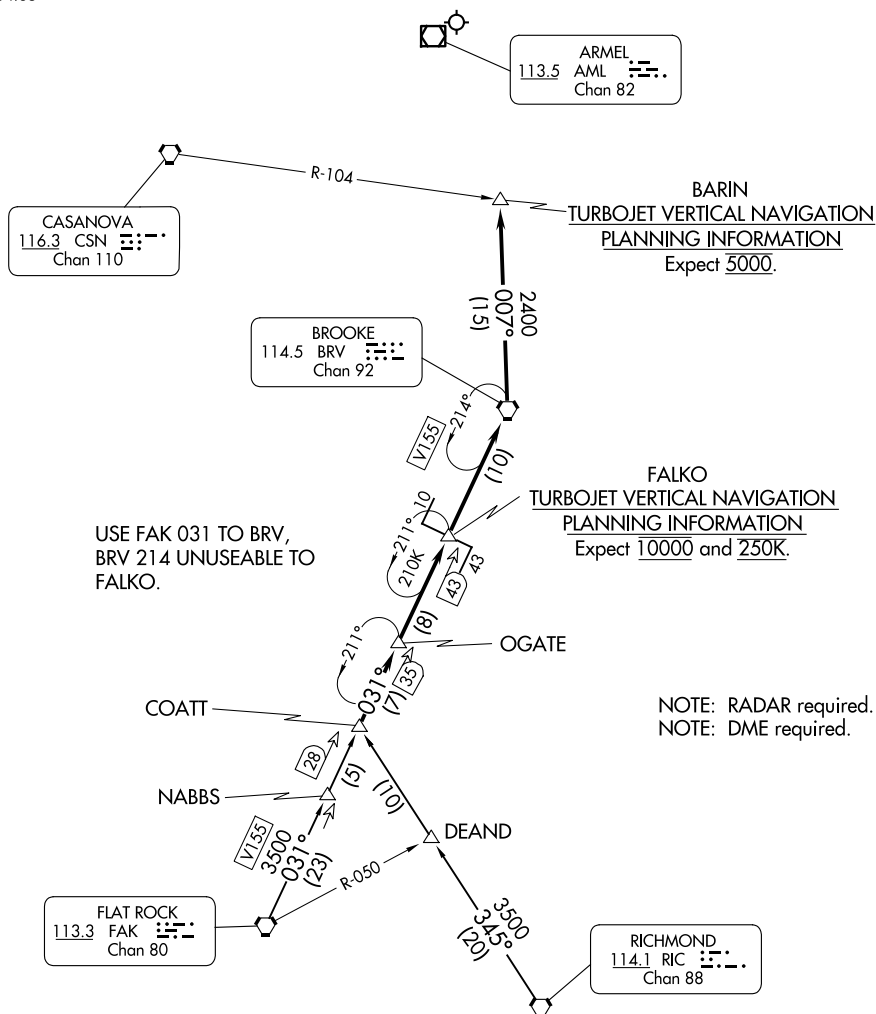


COATT FIVE ARRIVAL

POTOMAC APP CON
128.525 306.925
D-ATIS
134.85



NOTE: Chart not to scale.

FLAT ROCK TRANSITION (FAK.COATT5): From over FAK VORTAC on FAK R-031 to COATT. Thence

RICHMOND TRANSITION (RIC.COATT5): From over RIC VORTAC on RIC R-345 to COATT. Thence

. . . . From over COATT on FAK R-031 to BRV VORTAC, then on BRV R-007 to BARIN. Expect radar vectors to final approach course after BARIN.

COATT FIVE ARRIVAL

(COATT.COATT5) 07DEC17

WASHINGTON, DC
WASHINGTON DULLES INTL (IAD)

NE-3, 07 AUG 2025 to 04 SEP 2025