

RNAV (GPS) RWY 28  
ASHLAND RGNL (DWU)

**MISSED APPROACH:**  
Climb to 3300 direct  
NYOME and hold.

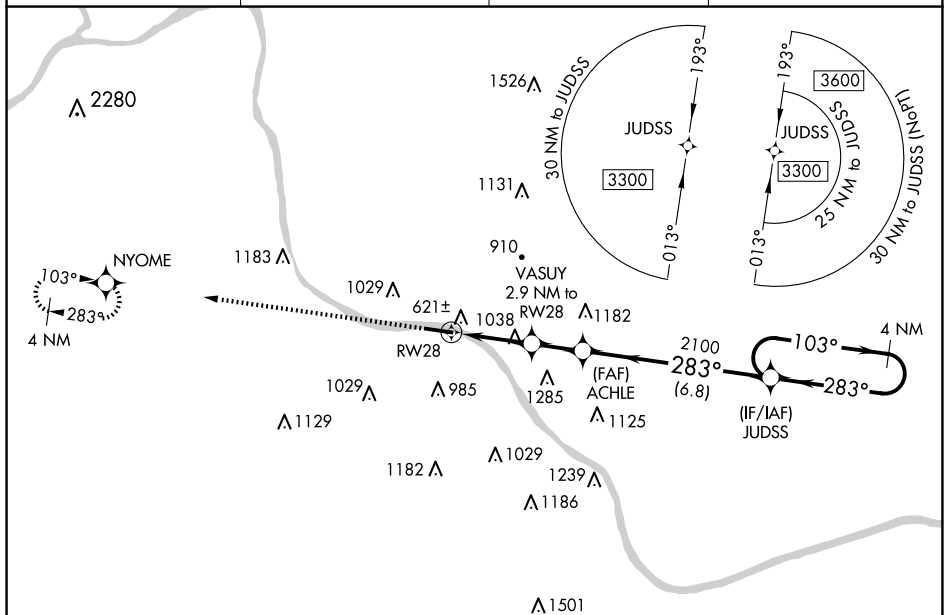

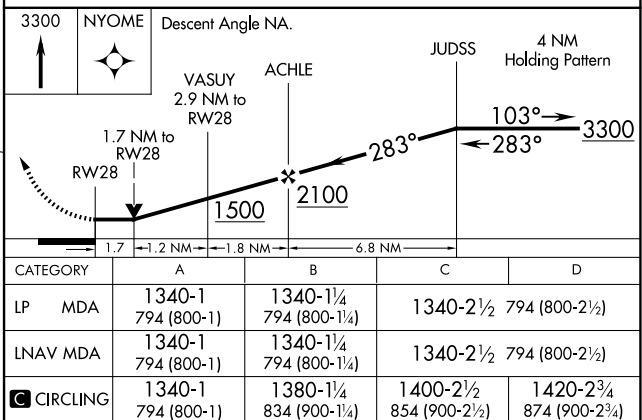
UNICOM  
122.8 (CTAF) 

Diagram illustrating the MRL Rwy 10-28, showing a runway with a length of 5402 x 100 feet, oriented at 283 degrees. The diagram includes runway lights, a star symbol, and a north arrow.



SE-1, 07 AUG 2025 to 04 SEP 2025

SE-1, 07 AUG 2025 to 04 SEP 2025