

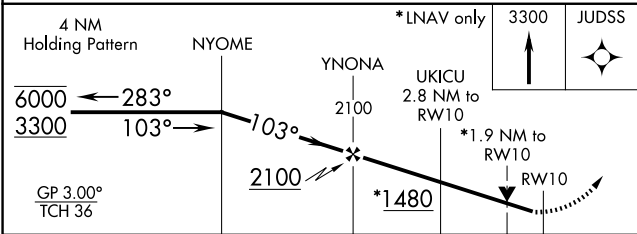
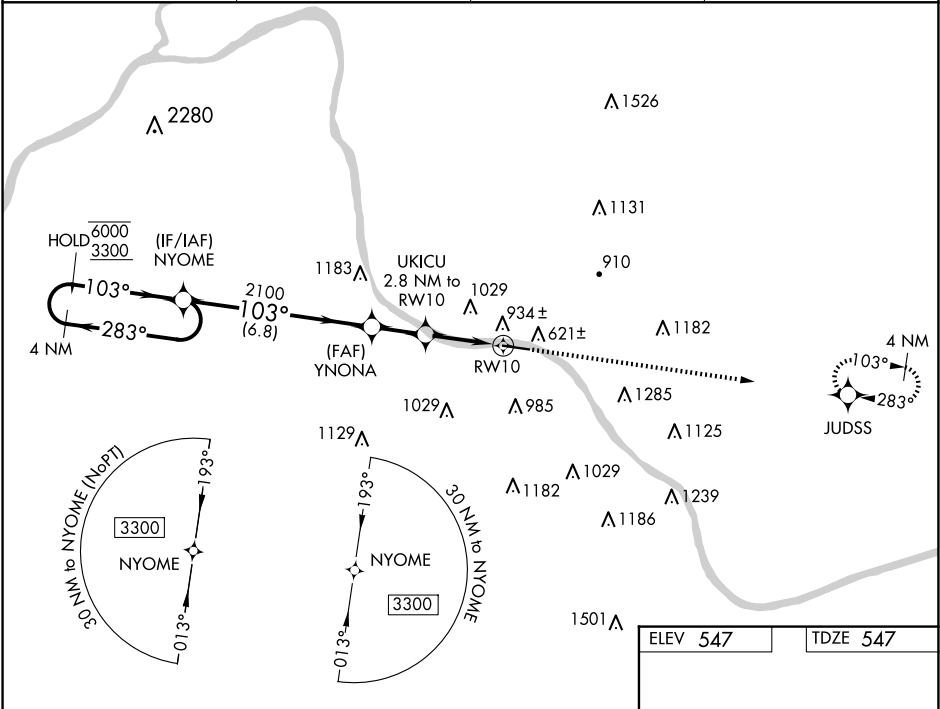
WAAS CH <b>72723</b> <b>W10A</b>	APP CRS <b>103°</b>	Rwy Idg TDZE Apt Elev <b>547</b>
--	------------------------	--

RNAV (GPS) RWY 10

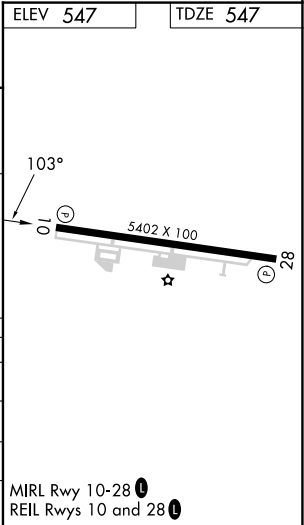
ASHLAND RGNL (DWU)

RNP APCH.	MISSED APPROACH: Climb to 3300 direct JUDSS and hold, continue climb-in-hold to 3300.
▼ Rwy 10 helicopter visibility reduction below ¾ SM NA. For uncompensated Baro-VNAV systems, LNAV/VNAV NA below -16°C or above 54°C.	

AWOS-3PT <b>132.425</b>	HUNTINGTON APP CON <b>128.4 270.1</b>	CLNC DEL <b>121.7</b>	UNICOM <b>122.8 (CTAF)</b>
----------------------------	--	--------------------------	-------------------------------



CATEGORY	A	B	C	D
LPV DA		799-1	252 (300-1)	
LNAV/VNAV DA		1095-1½	548 (600-1½)	
LNAV MDA	1200-1	653 (700-1)	1200-1⅞	653 (700-1⅞)
CIRCLING	1300-1 753 (800-1)	1380-1¼ 833 (900-1¼)	1380-2½ 833 (900-2½)	1420-2¾ 873 (900-2¾)



SE-1, 07 AUG 2025 to 04 SEP 2025

SE-1, 07 AUG 2025 to 04 SEP 2025