

VORTAC CRE	APP CRS	Rwy Idg	5997
114.4	238°	TDZE	30
Chan 91		Apt Elev	32

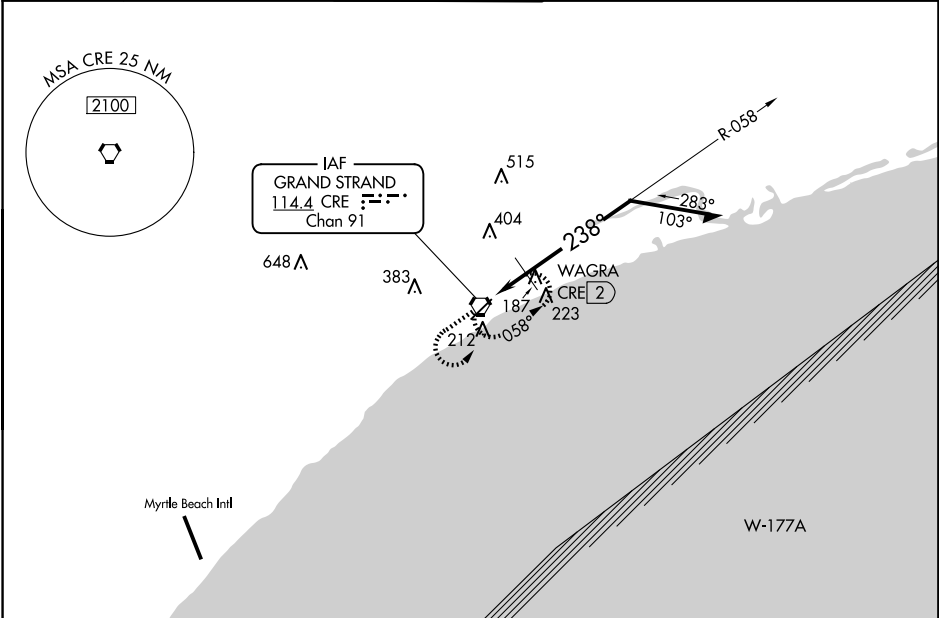
VOR RWY 23
GRAND STRAND (CRE)

⚠ Rwy 23 helicopter visibility reduction below ¾ SM NA.
For inop ALS, increase S-23 Cats A/B visibility to 1 SM.

MALSR

MISSED APPROACH: Climb to 2000 then left turn direct CRE VORTAC and hold.

ATIS 119.625	MYRTLE BEACH APP CON* 119.2 350.3	STRAND TOWER* 124.6 (CTAF) 0 257.6	GND CON 121.8 257.6	CLNC DEL 121.8	UNICOM 122.95
-----------------	--------------------------------------	---------------------------------------	------------------------	-------------------	------------------



2000

↑

CRE

CRE VORTAC

WAGRA CRE 2

580

1700

238°

058°

3.00°

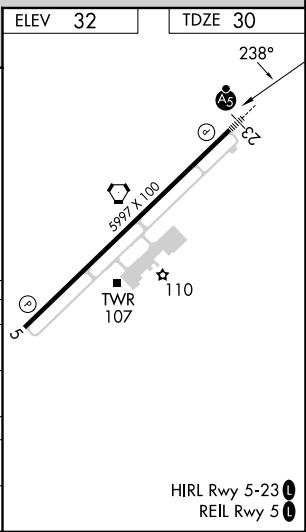
TCH 55

1.6 NM

0.4

Remain within 10 NM

CATEGORY	A	B	C	D
S-23	580-¾	550 (600-¾)	580-1⅛	550 (600-1⅛)
CIRCLING	580-1	548 (600-1)	720-2 688 (700-2)	720-2¼ 688 (700-2¼)
WAGRA FIX MINIMUMS				
S-23	480-¾	450 (500-¾)	480-⅞	450 (500-⅞)
CIRCLING	520-1	488 (500-1)	720-2 688 (700-2)	720-2¼ 688 (700-2¼)



SE-2, 07 AUG 2025 to 04 SEP 2025

SE-2, 07 AUG 2025 to 04 SEP 2025